



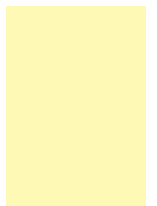
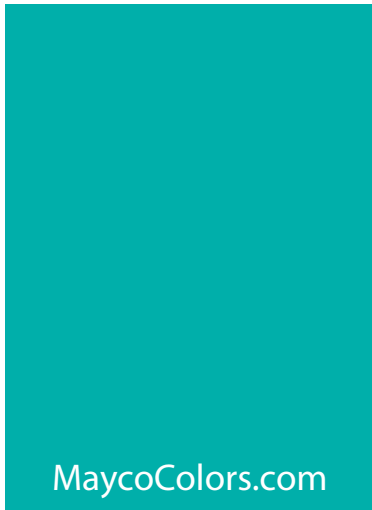
COLOR GUIDE

2019

Stroke & Coat®
 Foundations®
 Elements™
 Jungle Gems™
 Stoneware
 Fundamentals™
 ...more!



America's Finest Colors
 since 1954



MaycoColors.com

Hello Ceramic Friends!

We are happy to present our 2019 Color Guide, featuring our vast assortment of finishes for your ceramics and craft creations.

Ceramics is a wonderful combination of art and science. It can be a marvelous adventure or an epic disaster. Our team of professionally trained ceramic and chemical engineers and artists oversee our product development, quality control standards and manufacturing processes to insure our users receive the best we have to offer. We are committed to producing the highest quality product possible and strive for consistency and dependability. Ceramics isn't just our job—it's what we went to school for, it's what we do in our free time, and it's the art form we admire above all else.

Along with our commitment to product quality, we offer inspiration, education and technical service to our consumers.

- **Inspiration.** Our staff of artists create projects, techniques and imaginative uses of glaze to inspire or spark an idea for artists of all ages and abilities to implement in their own work.
- **Education.** We serve a passionate community of educators, hobbyists, students, studios, and professionals. Our website and collateral feature a great deal of product information and best practices for all markets. We also conduct workshops and have a growing collection of videos for our visual learners.
- **Technical Service.** We have specialists available to speak with you personally to answer questions, diagnose problems or make suggestions. They are supported by our ceramic engineering staff who are always available for consulting.

We hope our color guide ignites your creativity. **Mayco - America's Finest Colors since 1954.**

Creatively Yours,
The Mayco Team



Make it Colorful
Make it Fun
Make it Mayco

TABLE of CONTENTS

Stroke & Coat®	3-7
Speckled Stroke & Coat®, Class Packs	8-9
Foundations® - Opaque	10-11
Foundations® - Sheers & Matte	12
Jungle Gems™ Crystal Glazes	14-18
Elements™	20-21
Pottery Cascade™	21
Classic Crackle™, Cobblestone™	22
Designer Liner	23
Snowfall, Sculpting Medium, Wax Resist	24
Mayco Low-Fire Clear Glazes	25
Fundamentals™ Underglaze	27-28
Astro Gems™, Raku Glazes	29

Stoneware Glazes	31-41
Classics	33-34
Matte	35-36
Crystals	37
Clear	38
Flux	39
Wash	40
Glaze Combinations	41

Softees® Acrylics, Dazzling Metallics™ Softees® Pearls	42
Magic Metallics™, Non-Fired Accessories	43
Mid-Range Firing Guide, Reference	44-46

ICONS

<p>Products bearing the AP seal of the Art & Creative Materials Institute, Inc. (ACMI) are certified non-toxic and safe for use by all ages.</p>	<p>Glazes identified with the Dinnerware Safe icon indicates the fired glaze meets the FDA guidelines for food safe and is suitable for use on dinnerware.</p>
<p>Products bearing the CL seal of the ACMI contain toxic or hazardous ingredient(s), but can be used safely according to label directions. Not intended for use Pre-K- Grade 6.</p>	<p>Glazes identified with this version of the Dinnerware Safe icon are NOT safe for use on dinnerware.</p>
<p>Products bearing the Certified Non-Toxic seal have been reviewed by a toxicologist & deemed to have no health risk associated with the proper use of the product.</p>	<p>Glazes identified with this version of the Dinnerware Safe icon are safe for use on dinnerware after a clear glaze is applied and fired.</p>

Stroke & Coat™

The Creative Choice

Explore the Versatility of
"The Wonder Glaze"



The
Classroom

Perfect for
The Studio

The Potter &
The Fine Artist



What You See is
What you Get



Maria Pilar del Pino,
Mayco Distributor
Fine Things, Chile

AVAILABLE SIZES

- 2 oz squeeze
- 8 oz squeeze
- 16 oz squeeze
- Gallons (12 colors)



Stroke & Coat®



SC-37
Ivory Tower



SC-55
Yella Bout It



SC-6
Sunkissed



SC-42
Butter Me Up



SC-24
Dandelion



SC-97
Cant-elope



SC-80
Basketball



SC-23
Jack O'Lantern



SC-50
Orange Ya Happy



SC-2
Melon-Choly



SC-89
Cutie Pie Coral



SC-75
Orange-A-Peel



SC-22
Carrot Top



SC-88
Tu Tu Tango



SC-4
Salsa



SC-73
Candy Apple Red



SC-74
Hot Tamale



SC-82
Tuscan Red



SC-87
Ruby Slippers



SC-81
Cinnamon Stix



SC-1
Pink-A-Boo



SC-70
Pink-A-Dot

Famous No Fail Reds!

Heavy Pigmented



Stroke & Coat®
red hues are
the best on the
market!



CONE
06-10
(998°C - 1285°C)
(1828°F - 2345°F)



Conforms to
ASTM D 4236



Dinnerware Safe



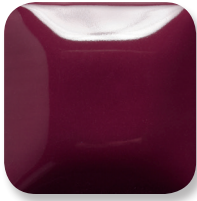
SC-95
Pinkie Swear



SC-17
Cheeky Pinky



SC-18
Rosey Posey



SC-3
Wine About It



SC-40
Blueberry Hill



SC-85
Orkid



SC-53
Purple Haze



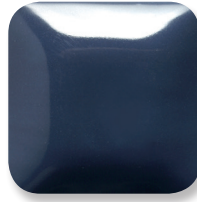
SC-72
Grape Jelly



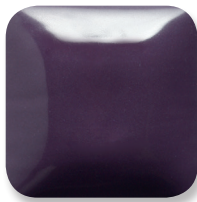
SC-13
Grapel



SC-33
Fruit of the Vine



SC-58
501 Blues



SC-71
Purple-licious



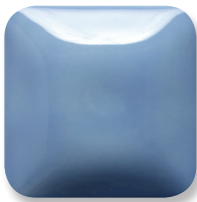
SC-91
Seabreeze



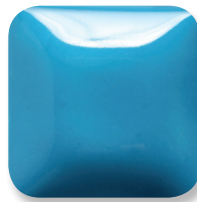
SC-45
My Blue Heaven



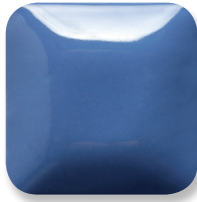
SC-65
Peri-Twinkle



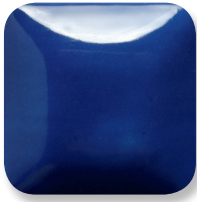
SC-30
Blue Dawn



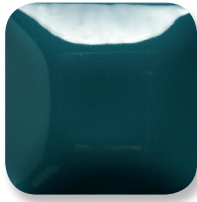
SC-11
Blue Yonder



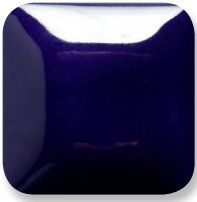
SC-31
The Blues



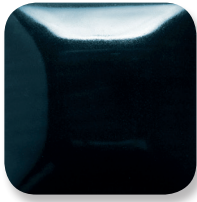
SC-76
Cara-Bein Blue



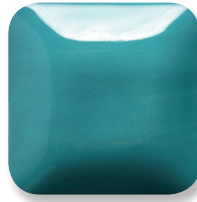
SC-29
Blue Grass



SC-12
Moody Blue

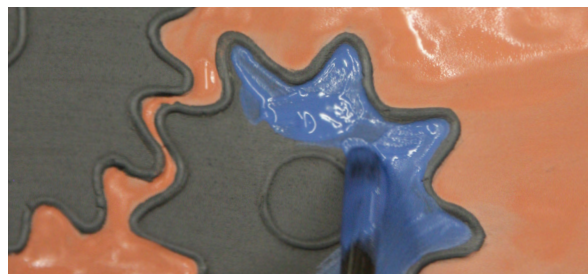


SC-32
Bluebeard



SC-28
Blue Isle

Glossy without clear glaze



More time for creativity

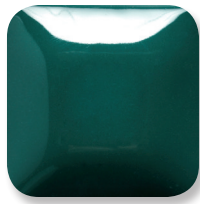
Stroke & Coat® can be applied to bisque or leather-hard clay



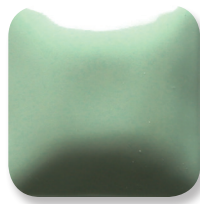
Stroke & Coat®



SC-9
Jaded



SC-10
Teal Next Time



SC-96
Aqu-ward



SC-77
Glo-Worm



SC-78
Lime Light



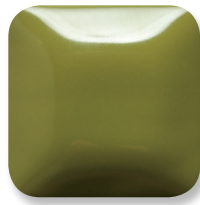
SC-93
Honeydew List



SC-43
Lettuce Alone



SC-27
Sour Apple



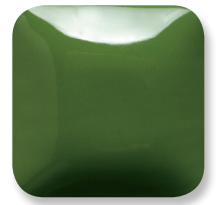
SC-52
Toad-ily Green



SC-7
Leapin' Lizard



SC-79
It's Sage



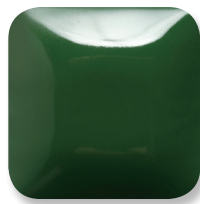
SC-26
Green Thumb



SC-39
Army Surplus



SC-8
Just Froggy



SC-36
Irish Luck



SC-86
Old Lace



SC-54
Vanilla Dip



SC-46
Rawhide

MIX YOUR OWN COLORS

Stroke & Coat® glazes are intermixable - create custom colors for specialized designs. A perfect tool for the art educator to teach color theory or create a wide palette with just a few colors.

Precise design work



Unlimited decorating techniques



Thin with water to create a "wash" or water-color style of design



CONE
06-10
(998°C - 1285°C)
(1828°F - 2345°F)



Conforms to
ASTM D 4236



Dinnerware Safe

Easily blends to seamless gradation



SC-20
Cashew Latex



SC-51
Poo Bear



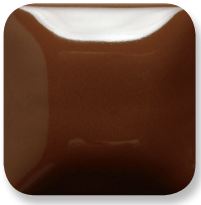
SC-5
Tiger Tail



SC-25
Crackerjack Brown



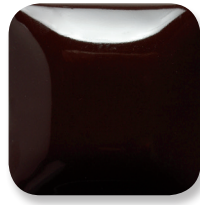
SC-41
Brown Cow



SC-48
Camel Back



SC-14
Java Bean



SC-34
Down To Earth



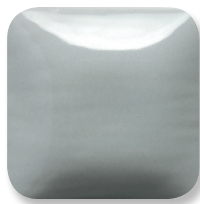
SC-92
Café Olé



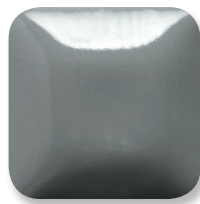
SC-90
Elephant Ears



SC-83
Tip Taupe



SC-60
Silver Lining



SC-35
Gray Hare



SC-16
Cotton Tail



SC-15
Tuxedo

BROAD FIRING RANGE

Many Stroke & Coat® glazes perform well at mid-range (cone 5/6) and higher temperature (cone 9/10). We recommend testing prior to use. Cone 6 performance is noted on each color's label

SC-73 Candy Apple Red



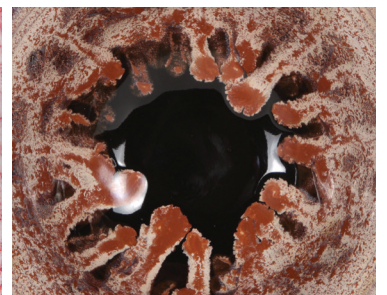
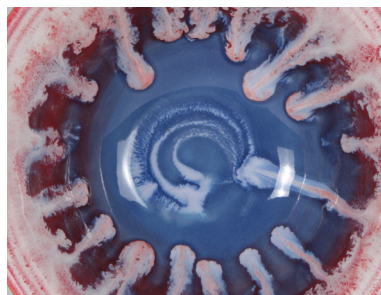
Cone 06
998°C / 1828°F

Cone 6
1222°C / 2232°F

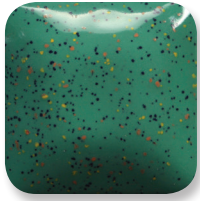
Cone 10
1285°C / 2345°F

Layer Stroke & Coat® color when applying or use in combination with other glazes, such as Foundations®, Jungle Gems™, Flux, or Cobblestones.

Stroke & Coat® featured with SW-401 Light Flux to cone 6



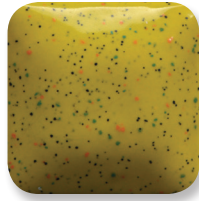
Speckled Stroke & Coat® and Stroke & Coat® Accents



SP-209
Speckled
Jaded



SP-237
Speckled
Ivory Tower



SP-277
Speckled
Glo-Worm



SP-288
Speckled
Tu Tu Tango



SP-206
Speckled
Sunkissed



SP-275
Speckled
Orange-A-Peel



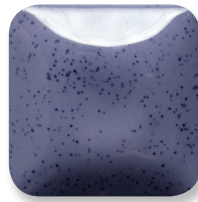
SP-274
Speckled
Hot Tamale



SP-201
Speckled
Pink-A-Boo



SP-270
Speckled
Pink-A-Dot



SP-253
Speckled
Purple Haze



SP-213
Speckled
Grapel



SP-245
Speckled
My Blue Heaven



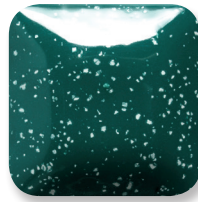
SP-211
Speckled
Blue Yonder



SP-231
Speckled
The Blues



SP-212
Speckled
Moody Blue



SP-210
Speckled
Teal Next Time



SP-227
Speckled
Sour Apple



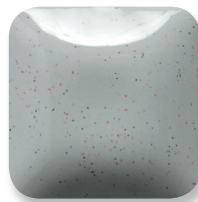
SP-226
Speckled
Green Thumb

SPECKLED
Stroke
& Coat®

Speckled Stroke & Coat®
feature small specks of color
added to the base glaze in the
Stroke & Coat® line.



SP-254
Speckled
Vanilla Dip



SP-260
Speckled
Silver Lining



SP-215
Speckled
Tuxedo



SP-216
Speckled
Cotton Tail



Performing just as
their counterparts,
the specks provide a
fun visual interest



SA-002
Black

Stroke & Coat® Accents

A dimensional
glaze used to create
raised designs such
as outlines, dots,
squiggles, etc.

1.25 oz squeeze bottle.
Certified AP Non-Toxic

CONE
06-10
(998°C - 1285°C)
(1828°F - 2345°F)



Conforms to
ASTM D 4236



Dinnerware Safe

Stroke & Coat® and Speckled Stroke & Coat® Class Packs

CLASS PACKS!

Mayco Stroke & Coat® glazes are available in assortments that include our most popular colors.



STROKE & COAT® KIT 1

SC-KIT1 12 - 2 oz squeeze bottles of the following colors.

SC-KT1P 12 pint bottles of the following colors.



SC-16 Cotton Tail	SC-18 Rosey Posey	SC-26 Green Thumb
SC-6 Sunkissed	SC-13 Grapel	SC-36 Irish Luck
SC-75 Orange-A-Peel	SC-11 Blue Yonder	SC-14 Java Bean
SC-74 Hot Tamale	SC-12 Moody Blue	SC-15 Tuxedo

STROKE & COAT® KIT 3

SC-KIT3 12 - 2 oz squeeze bottles of the following colors.

SC-KT3P 12 pint bottles of the following colors.



SC-16 Cotton Tail	SC-1 Pink-A-Boo	SC-27 Sour Apple
SC-6 Sunkissed	SC-3 Wine About It	SC-36 Irish Luck
SC-23 Jack O'Lantern	SC-31 The Blues	SC-48 Camel Back
SC-73 Candy Apple Red	SC-12 Moody Blue	SC-15 Tuxedo

STROKE & COAT® KIT 2

SC-KIT2 12 - 2 oz squeeze bottles of the following colors.

SC-KT2P 12 pint bottles of the following colors.



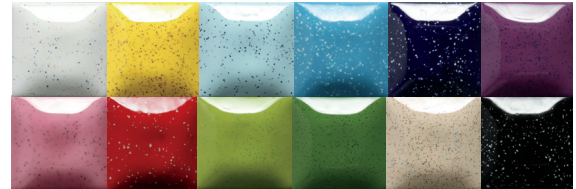
SC-16 Cotton Tail	SC-3 Wine About It	SC-8 Just Froggy
SC-24 Dandelion	SC-30 Blue Dawn	SC-20 Cashew Later
SC-1 Pink-A-Boo	SC-28 Blue Isle	SC-25 Crackerjack Brown
SC-17 Cheeky Pinky	SC-10 Teal Next Time	SC-15 Tuxedo

SPECKLED STROKE & COAT® KIT-

a collection of speckled versions of the most popular colors.

SP-KIT2 12 - 2 oz squeeze bottles of the following colors.

SR-KT2P 12 pint bottles of the following colors.



SP-216 Speckled Cotton Tail	SP-212 Speckled Moody Blue	SP-227 Speckled Sour Apple
SP-206 Speckled Sunkissed	SP-213 Speckled Grapel	SP-226 Speckled Green Thumb
SP-245 Speckled My Blue Heaven	SP-270 Speckled Pink-A-Dot	SP-254 Speckled Vanilla Dip
SP-211 Speckled Blue Yonder	SP-274 Speckled Hot Tamale	SP-215 Speckled Tuxedo.

Great choice for the classroom or studio.

Stroke & Coats® has the versatility that artists of all ages want!

Value priced packs are available in 2 oz and pints.

Teacher tested



Student Approved!

Foundations®

Opaque

Sheer

Matte



Available in a wide assortment of colors, opacities, and textures. They easily serve as the "foundation" for any project.

Stable & Nonmoving for Design Work



Using Foundations® on clay or bisque is a walk in the park. Quickly and easily apply Foundations® for all over coverage or painterly design techniques.



AVAILABLE SIZES

4 oz jar
16 oz wide mouth pint
Gallons (15 colors)



Foundations® Opaque



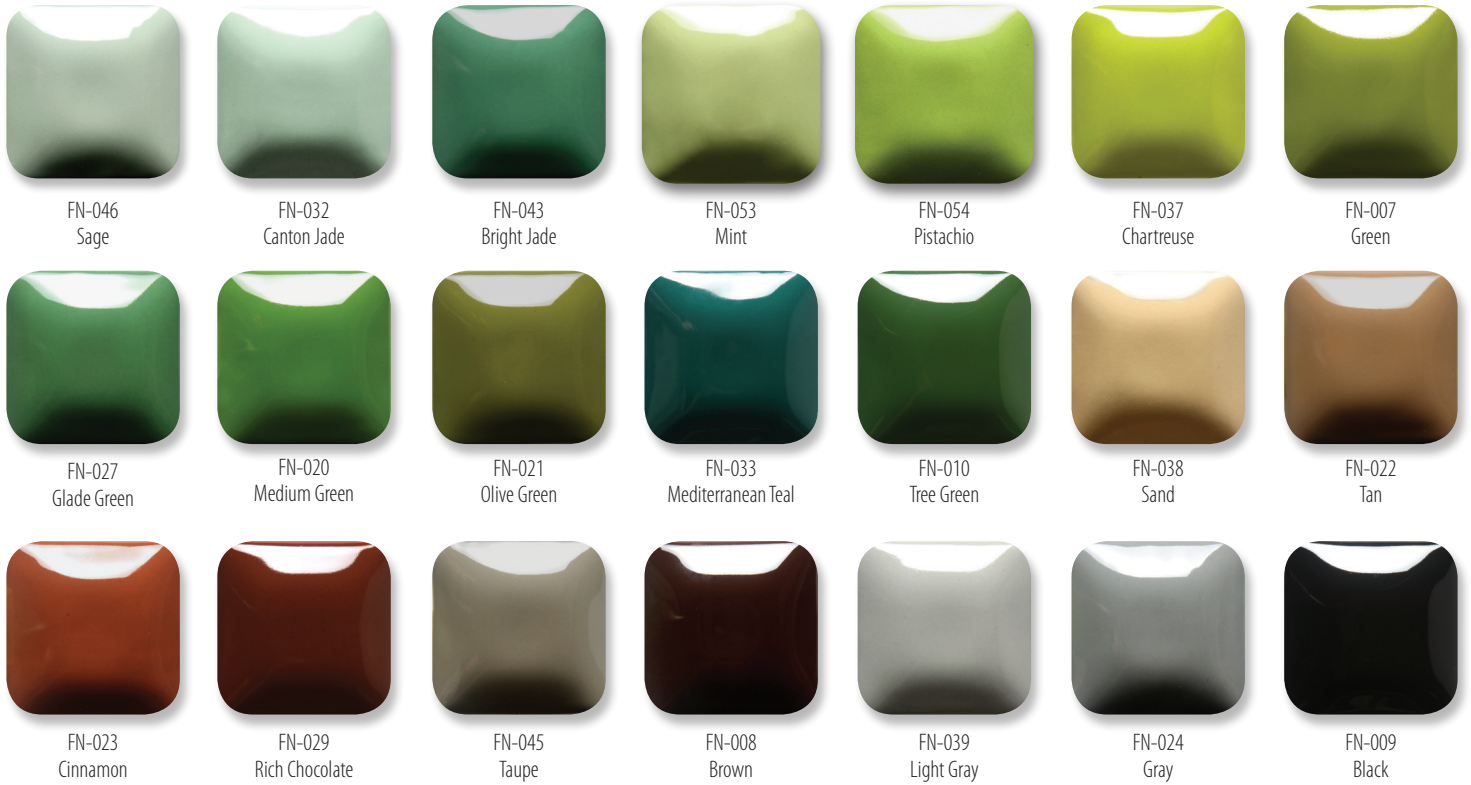
Fundamental & Functional

Dries
quickly for
same day
fring



CONE
06 - 6
(998°C - 1285°C)
(1828°F - 2232°F)

Foundations® Opaque



INTERMIXABLE!

Create a custom color for specialized designs or extend your palette with just a few colors.

CLASS PACKS/KITS



Foundations® KIT

FN-KIT3 Contains 12 - 4 oz jars, one each of the following colors.

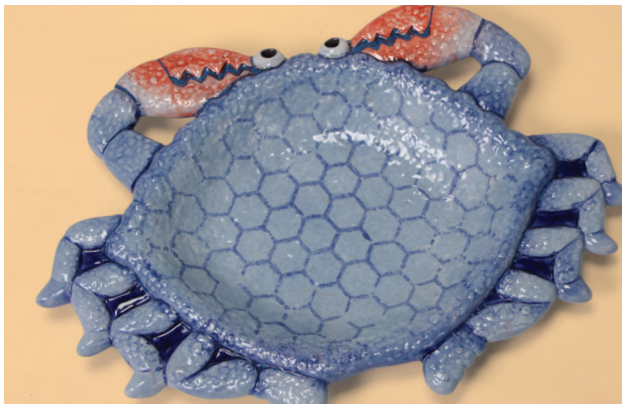
FN-KT3P Contains 12 pint bottles, one each of the following colors.



FN-001 White
FN-002 Yellow
FN-003 Orange
FN-004 Red

FN-005 Pink
FN-017 Purple
FN-018 Bright Blue
FN-019 Dark Blue

FN-007 Green
FN-020 Medium Green
FN-008 Brown
FN-009 Black



Can be applied to bisque or leather-hard clay



CONE
06 - 6

(998°C - 1285°C)
(1828°F - 2232°F)



Conforms to
ASTM D 4236



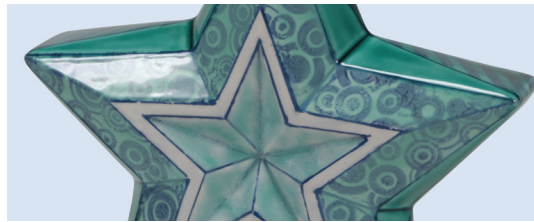
Dinnerware Safe

Foundations[®]

Sheer



CONE
06 - 6
(998°C - 1285°C)
(1828°F - 2232°F)



Soft & translucent. Add a tint of color to your work, allowing surface textures or design to show through.



FN-221
Milk Glass White



FN-203
Dry Champagne



FN-206
Lemon Ice



FN-207
Orange Slice



FN-230
Poppy



FN-209
Floral Pink



FN-223
Amethyst



FN-208
Crystal Coral



FN-211
Sheer Blue



FN-212
Blue Diamond



FN-213
Saffire Blue



FN-224
Key Lime



FN-216
Sea Glass



FN-231
Clearly Jade



FN-214
Pastel Jade



FN-201
Golden Clear



FN-202
Yadro



FN-204
Mudpuddle Brown



FN-205
Saddle Tan



FN-220
Sooty Grey



FN-229
Iced Mocha

Foundations[®]

Matte



CONE
05 - 06
(998°C - 1285°C)
(1828°F - 2232°F)

Opaque, matte finish. Use Stroke & Coat[®] in design over Foundations[®] Matte to create contrast.



Alina Maddex



FN-301
Marshmallow White



FN-302
Ivory Cream



FN-304
Black Velvet

Jungle Gems™ Crystal Glaze

Unleash Your
Creativity!



For Artists
of All Ages

Crystals bloom
in the kiln and
transform the glaze
into a unique &
beautiful surface for
decorative ware.



Art in a Jar

Crystal glazes can be fired to higher
temperatures for very interesting results.



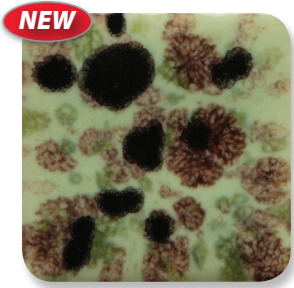
inspired by Nick Cave

AVAILABLE SIZES

4 oz jar
16 oz pint



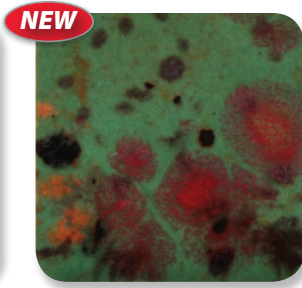
Crystal Glazes



CG-992
Mint Chip



CG-993
Lavender Sprigs



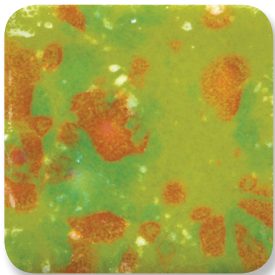
CG-994
Field & Flowers



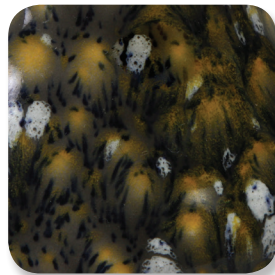
CG-995
Foggy Mist



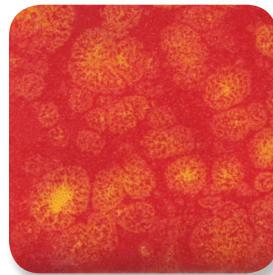
CG-996
Spring Rain



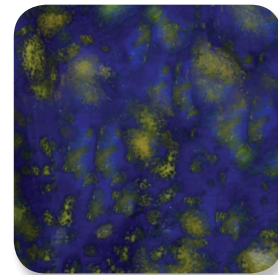
CG-987
Tree Frog



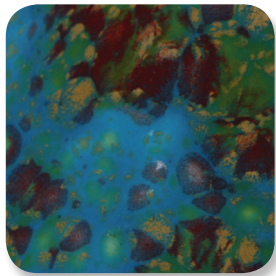
CG-988
Fireflies



CG-989
Fruit Punch



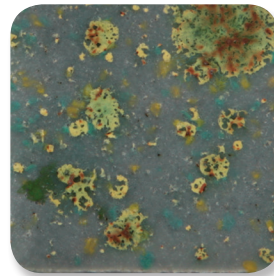
CG-990
Starry Night



CG-985
Monet's Pond



CG-986
Smoke & Fire



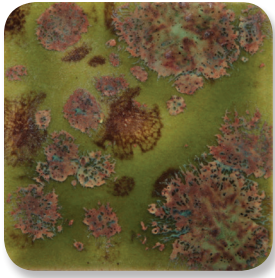
CG-991
Mountain Moss



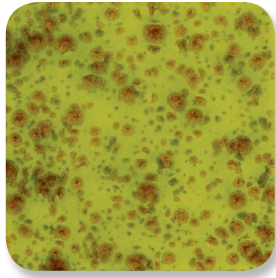
Except:
Jungle Gems
on page 18
marked CL

CONE
06/05
(998°C - 1031°C)
(1828°F - 1888°F)

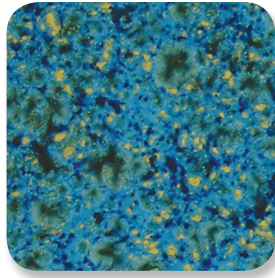
Crystal Glazes



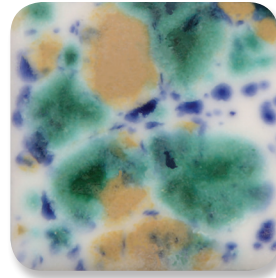
CG-716
Pagoda Green



CG-717
Pistachio



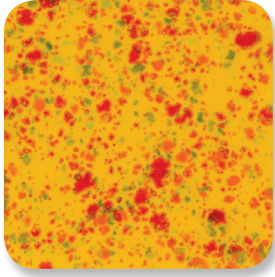
CG-718
Blue Caprice



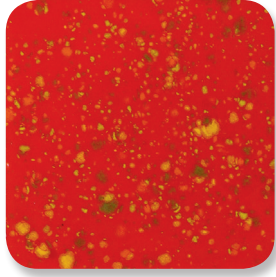
CG-722
Seawind



CG-750
Noel



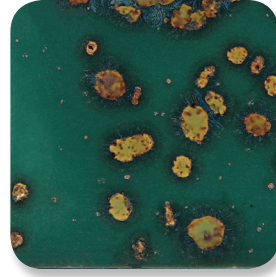
CG-753
Sassy Orange



CG-756
Firecracker



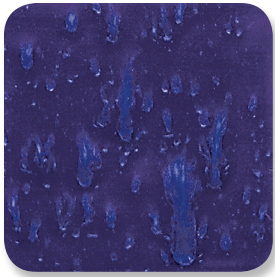
CG-779
Black Opal



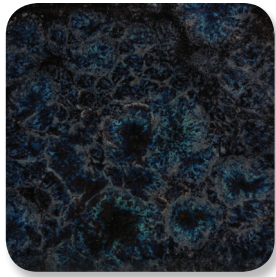
CG-780
Mystic Jade



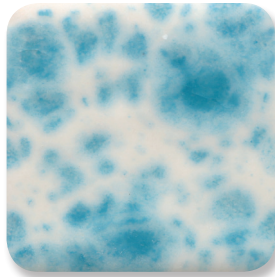
CG-783
Strawberry Sundae



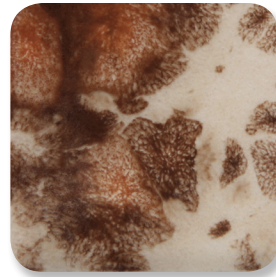
CG-785
Royal Fantasy



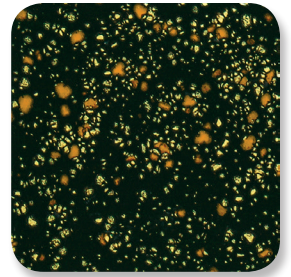
CG-786
Obsidian



CG-788
Dutch Enamelware



CG-795
Yadro Print



CG-798
Black Iris



Design with glaze combinations by layering with Stroke & Coat®, Foundations® or Cobblestone

Accent to your design

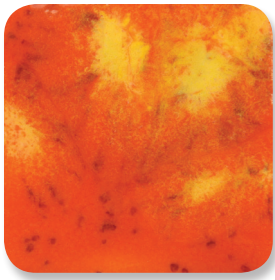


Standalone for stunning effects

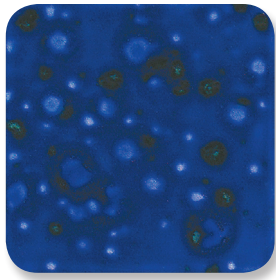
Except: Jungle Gems on page 18 marked CL
 Conforms to ASTM D 4236

 NOT Dinnerware Safe

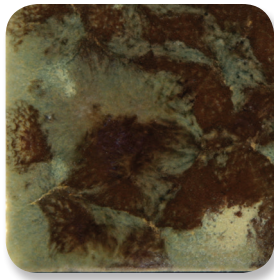
Crystal Glazes



CG-954
Wildfire



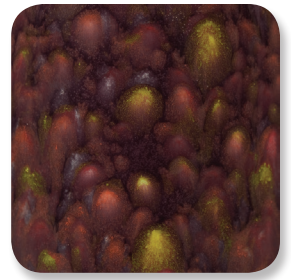
CG-958
Lagoon Blue



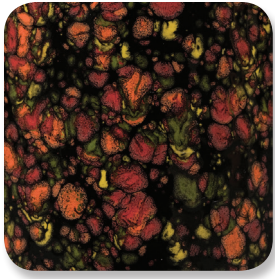
CG-967
Green Agate



CG-968
Peppermint Twist



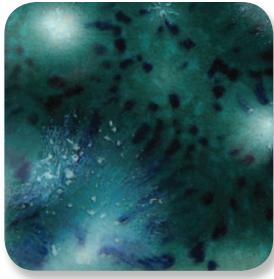
CG-969
Floral Fantasy



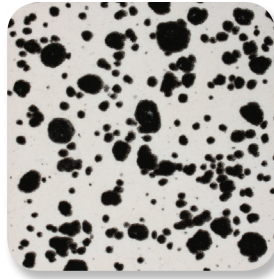
CG-970
Masquerade



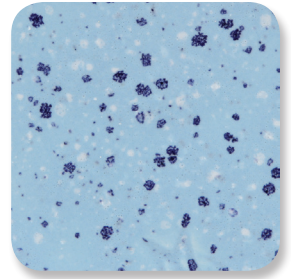
CG-972
Dragon's Breath



CG-974
Bloomin' Blue



CG-977
Ink Spots



CG-978
Arctic Splash



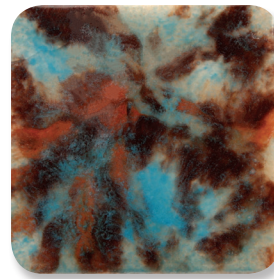
CG-962
Blue Azure



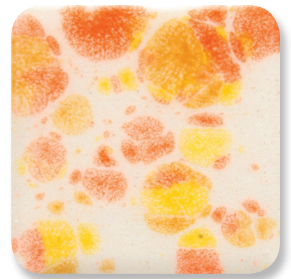
CG-963
Lemon Lime



CG-964
Kaleidoscope



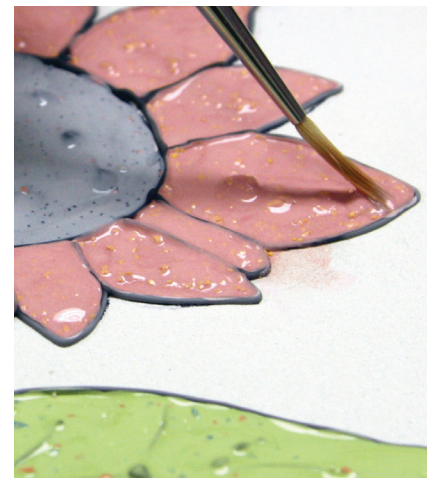
CG-965
Mocha Marble



CG-966
Tiger Lily

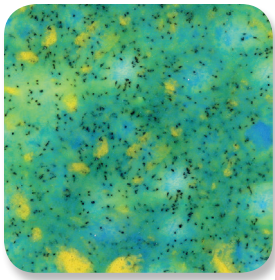


TIP:
Redistribution of crystals may be required during final coat. Where the individual crystals reside is where they will burst into colors during firing.

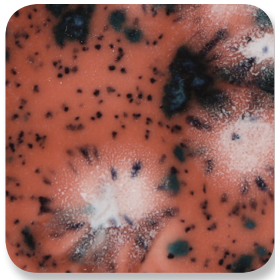


TIP: Store upside down with lid on securely to aid in the mixing of the crystals

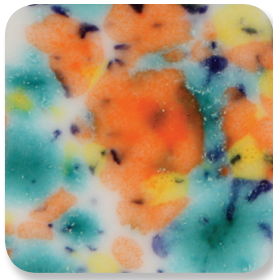
Crystal Glazes



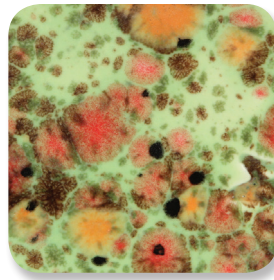
CG-979
Meadow



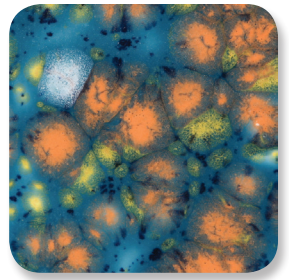
CG-980
Coral Puff



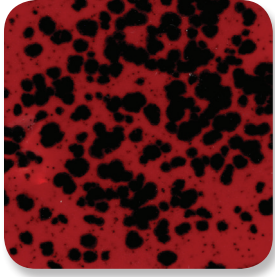
CG-981
Fruity Freckles



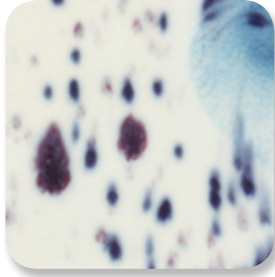
CG-982
Mixed Melon



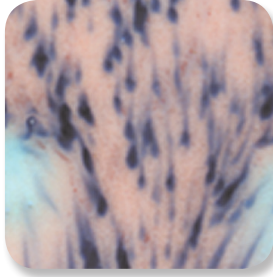
CG-983
Koi Pond



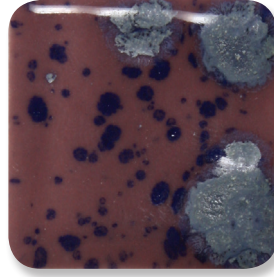
CG-984
Ladybug



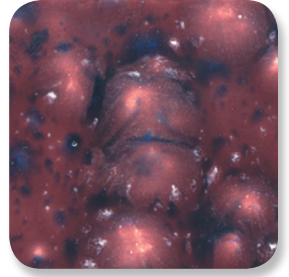
S-2701
Peacock Eyes



S-2702
Northern Lights



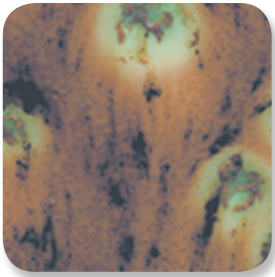
S-2703
Berryberry Pie



S-2704
Plum Jelly



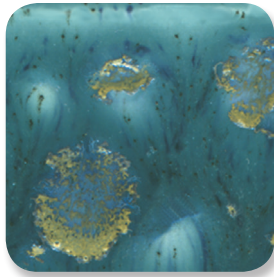
S-2708
Oriental Carmel



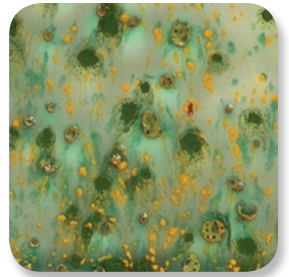
S-2709
Cappuccino Mint



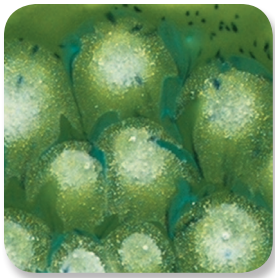
S-2711
Tahiti Grape



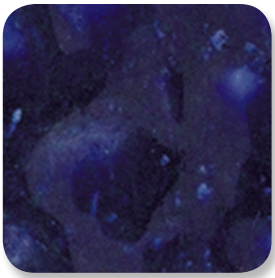
S-2712
Monsoon Seas



S-2714
Herb Garden



S-2715
Spotted Kiwi



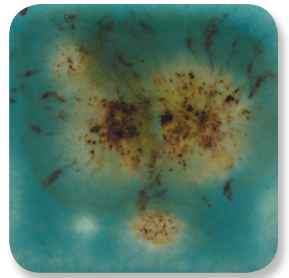
S-2716
Celestial Blue



S-2718
Cosmic Black



S-2723
Grape Divine



S-2724
Lotus Blossom

CONE 06/05
(998°C - 1031°C)
(1828°F - 1888°F)

AP
Conforms to
ASTM D 4236

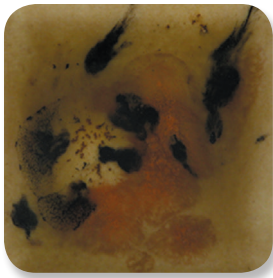
CL
Conforms to
ASTM D 4236

Except:
Jungle Gems
on page 18
marked CL

NOT
Dinnerware Safe

To make your crystal glazes go further,
base coat ware with a complimentary
Foundation® color

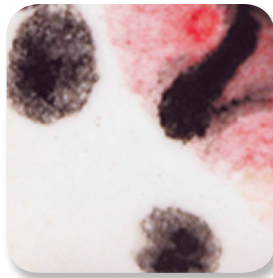
Crystal Glazes



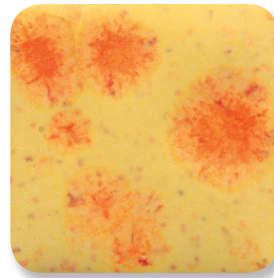
S-2725
Safari



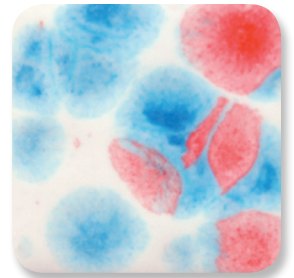
S-2726
Cheetah



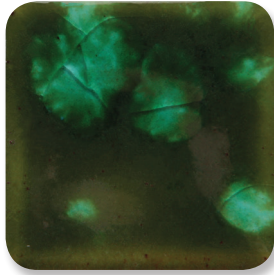
S-2727
Poppy Fields



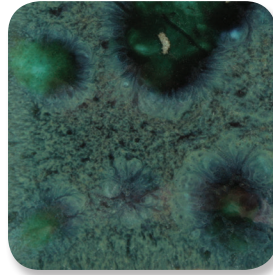
S-2729
Citrus Splash



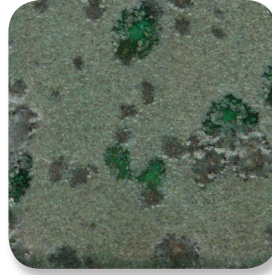
S-2731
Kaboom



CG-707
Woodland Fantasy



CG-713
Peacock Green



CG-973
Alligator



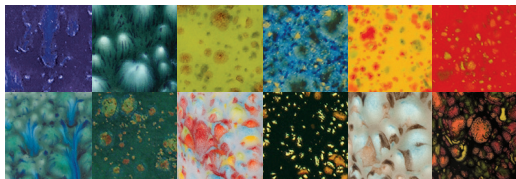
*CG-707 Woodland Fantasy, CG-713 Peacock Green are considered health caution due to soluble Copper in the formulation. CG-973 Alligator is considered health caution due to Barium in the formulation.

CLASS PACKS/KITS

Jungle Gems™ Crystal Glazes Kit

CG-KIT2 Contains 12 – 4 oz jars, one each of the following colors.

CG-KT2P Contains 12 – Pints - one each of the following colors.



CG-785 Royal Fantasy
CG-974 Bloomin' Blue
CG-717 Pistachio
CG-718 Blue Caprice

CG-753 Sassy Orange
CG-756 Firecracker
CG-962 Blue Azure
CG-780 Mystic Jade

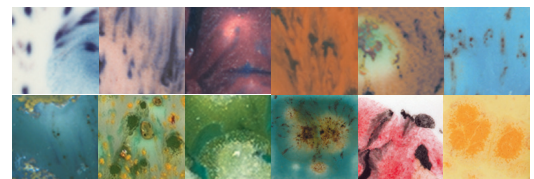
CG-964 Kaleidoscope
CG-798 Black Iris
CG-965 Mocha Marble
CG-970 Masquerade.



Crystalites™ Kit

S2-KIT2 Contains 12 – 4 oz jars, one each of the following colors.

S2-KT2P Contains 12 – Pints, one each of the following colors.



S-2701 Peacock Eyes
S-2702 Northern Lights
S-2704 Plum Jelly
S-2708 Oriental Carmel

S-2709 Cappuccino Mint
S-2711 Tahiti Grape
S-2712 Monsoon Seas
S-2714 Herb Garden

S-2715 Spotted Kiwi
S-2724 Lotus Blossum
S-2727 Poppy fields
S-2729 Citrus Splash

Value priced packs available in 4 oz and pint sizes



Jungle Gems™ Class Packs contain a collection of the most popular colors of our crystal-infused gloss glazes



Except: Jungle Gems on page 18 marked CL

CONE
06/05
(998°C - 1031°C)
(1828°F - 1888°F)

Elements™



Inspired by nature Elements™ and Element Chunkies™ produce lush, organic, and earthy hues.



Designed to simulate the aesthetic, movement, & interest of mid and high fire glazes at cone 06/05.



AVAILABLE SIZES

4 oz jar
16 oz wide mouth pint



Use Elements™ to create designs with layering and glaze combinations.



EL-142
Grass



EL-143
Cactus Flower



EL-144
Dark Amethyst



EL-145
Ginger Root



EL-146
Rain Cloud



EL-147
Creek Bed



EL-101
Oyster Shell



EL-103
Sea Spray



EL-107
Amber Ash



EL-110
Mudslide



EL-118
Blue Grotto



EL-121
Copper Adventurine



EL-125
Sahara Sands



EL-127
Rose Granite



EL-128
Wheat



EL-129
Slate



EL-130
Sea Green



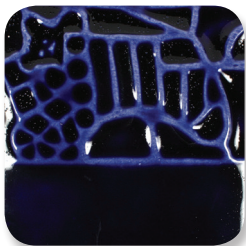
EL-131
Turtle Shell



EL-132
Rust Red



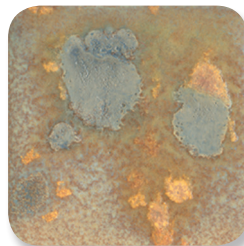
EL-133
Autumn



EL-134
Mirror Blue



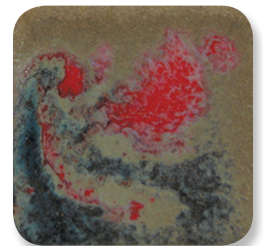
EL-204
Glowing Embers



EL-207
Gold Mine



EL-209
Night Sky



EL-211
Volcanic Glow



Surface vary from gloss to matte, with subtle variations in each color for a truly unique look.





 Except: Elements™ glazes on page 21 marked CL
 Conforms to ASTM D 4236
 Conforms to ASTM D 4236
CONE 06/05
 (998°C - 1031°C)
 (1828°F - 1888°F)

Elements™



EL-106
Tidal Pool



EL-113
Spanish Moss



EL-117
Waterfall



EL-119
Burnished Steel



EL-120
Black Ice



EL-122
Malachite



EL-123
Patina



EL-124
Stormy Blue



EL-136
Lapis Lagoon



EL-137
Black Adventurine



EL-135
Rare Earth



EL-140
Toasted Almond



EL-141
Aged Bronze



EL-205
Jade Pebble



EL-208
Moss Creek



FN-215
Aztec Jade



FN-217
Evergreen Fir



FN-218
Green Sapphire



FN-219
Lustre Green

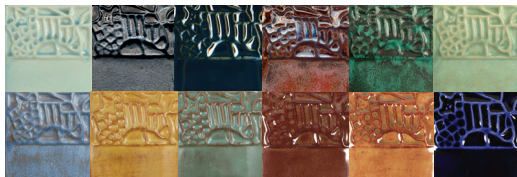
Colors within this border are rated
CL Health Caution.

CLASS PACKS/KITS

Our Elements™ glazes kit

EL-KIT2 Contains 12 – 4 oz jars

EL-KT2P Contains 12 – Pints



EL-103 Sea Spray
EL-119 Burnished Steel
EL-120 Black Ice
EL-121 Copper Adventurine

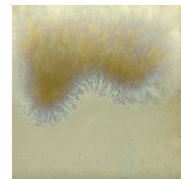
EL-122 Malachite
EL-123 Patina
EL-124 Stormy Blue
EL-128 Wheat

EL-130 Sea Green
EL-132 Rust Red
EL-133 Autumn
EL-134 Mirror Blue

Pottery Cascades



Conforms to
ASTM D 4236



PC-601
Clear Cascade



PC-602
White Cascade

Pottery Cascades are moving, flowing glazes, commonly used under or over other glazes to create reactions.

1-2 coats can be applied randomly or uniformly brushed or dabbed on with a sponge.

Specialty Glazes

Classic Crackles™



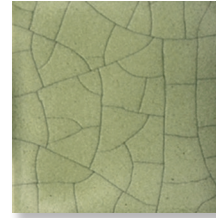
CONE 06/05
(998°C - 1031°C)
(1828°F - 1888°F)



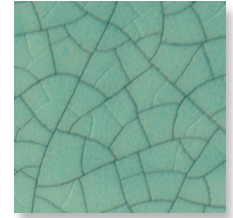
CC-101
Transparent



CC-102
White



CC-107
Green Tea



CC-108
China Sea

Certified AP Non Toxic, available on 4 oz and pint sizes.

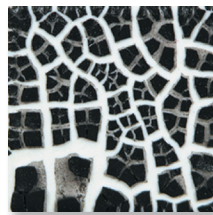


A low-fire glaze, Classic Crackles™ are designed to create crackle patterns during the firing process, traditionally used to create a vintage or antique appeal.

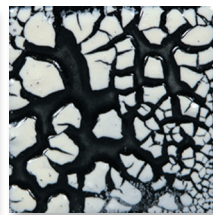


TIP: After firing to cone 06/05, wipe an acrylic or ink over the ware and wipe off, allowing the ink to highlight the cracking effects.

Cobblestone



SG-201
Black Cobblestone
over white base glaze



SG-202
White Cobblestone
over black base glaze



CONE 06/05
(998°C - 1031°C)
(1828°F - 1888°F)

During the firing process, a shattered pattern of raised, irregular chips emerge with the underlying glaze appearing in the cracks



Create a textured “cobbled” surface by applying Cobblestone over another glaze and fire to cone 06-6.

To create a colorful textural effect, brush 1 coat of Stroke & Coat® glaze of choice over SG-202 White Cobblestone and fire.

Specialty Glazes



For line work or brushing

Create fine or extra bold line work in elaborate illustrations



SG-401 Black



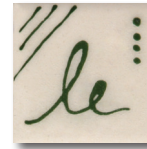
SG-402 White



SG-403 Red



SG-404 Blue



SG-405 Green



SG-406 Brown



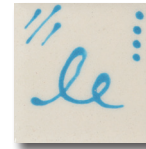
SG-407 Yellow



SG-408 Orange



SG-409 Bright Green



SG-410 Bright Blue



SG-411 Purple

Lettering & Calligraphy

The included metal tip allows for smooth & easy writing

CLASS PACKS/KITS



Designer Liner kit

CLASS PACK

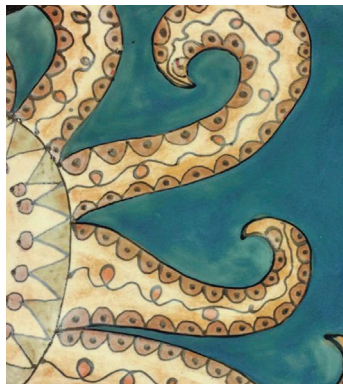
DL-KIT3 contains 6 - 1.25 oz bottles of the best selling Designer Liner colors.



SG-401 Black
SG-402 White

SG-403 Red
SG-404 Blue

SG-406 Brown
SG-409 Bright Green



Brush apply to simulate a watercolor or ink wash effect

Rich Pigment



CONE 06-10
(998°C - 1285°C)
(1828°F - 2345°F)

AP
ACME
CONFORMS TO
ASTM D 4236

Dinnerware Safe with Clear Glaze

Specialty Glazes

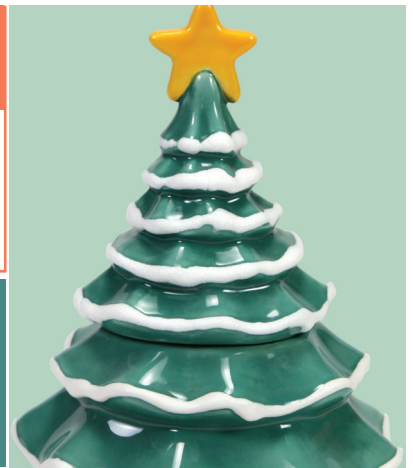


SG-302
Snowfall

Snowfall SG-302

A low-fire, dimensional glaze that creates a white, textured surface.

Mimicking the appearance of snow, it can also be used as a textured glaze to add design to work.



CONE 06/05
(998°C - 1031°C)
(1828°F - 1888°F)

Certified AP Non Toxic, available in 4 oz and pint sizes.



SG-501
Sculpting Medium

Sculpting Medium SG-501

A low-fire, dimensional glaze that produces a white, raised surface.

Use a sponge, detail bottle, palette knife, or stencil, to apply Sculpting Medium.



Create unique effects and texture to your work using Sculpting Medium with Mayco Designer Stencils. Layer glazes on top for colorful, stunning effects.



CONE 06/05
(998°C - 1031°C)
(1828°F - 1888°F)

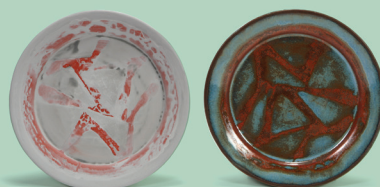
Certified AP Non Toxic, available in 4 oz and pint sizes.

Wax Resist AC-302

A wax coating that repels glaze. Protect previous design work or use to enhance organic design. Burns off during firing.



Available in 2 oz, wide-mouth pint jar and gallon sizes.



Clay Mender AC-306

Clay based additive that can be used to repair greenware or bisque surface details.

Kiln Wash AC-001

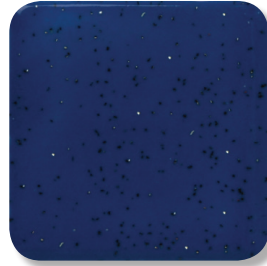
Kiln Wash protects your kiln shelves from dripping glaze and repairs damaged shelves of divots and dings. Does not crack or peel during firing.

Low-Fire Clear Glazes

Speckta-Clear

Speckta-Clear functions as high-gloss clear glaze with the added surprise of specks! With only one coat on a glazed background, Speckta-Clear provides a pleasing compliment or contrast of shiny and colorful specks.

Clear glaze with specks!



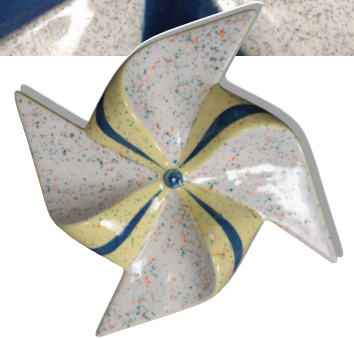
*SG-701
Star Dust

* Over SC-76 Cara-Bein Blue



*SG-702
Celebration

*Over SC-55 Yella Bout It and unglazed bisque



Designed to be used in low fire, these clear glazes can be used for all over coverage or in design with Stroke & Coat®, Foundations®, Fundamentals™, and other Mayco glazes. How is that for a creative spark?

Low-Fire Clear Glazes

CLEAR ONE NT-CLR/3

Non-Toxic
Clear
Dipping Glaze

Food Safe.

NT-CLR Clear One Dipping Glaze

Fast drying and has a gloss finish. Compatible with Chrome tin. Certified AP Non-Toxic and Food safe.

3 gallon pail.

CRYSTAL CLEAR DIPPING S-2000

Non-Toxic
Clear
Dipping Glaze

Food Safe.

S-2000 Crystal Clear Dipping Glaze

Ideal for large quantities of pieces. Certified AP Non-Toxic. Food safe and luster compatible.

1 gallon & 3 gallon pail.



CLEAR ONE BRUSHING NT-BR

Non-Toxic Clear Brushing Glaze

Non-Toxic • Lead Free • Food Safe

NT-BR Clear One Brushing

Fast drying and has a gloss finish. Compatible with Chrome tin. Certified AP Non-Toxic and Food safe.

4oz, pints and gallon.



CRYSTAL CLEAR BRUSHING S-2101

Non-Toxic Clear Brushing Glaze

16 fl oz (473ml)
Food Safe

S-2101 Crystal Clear Brushing

Smooth, clear and glossy finish. Certified AP Non-Toxic. Food safe and luster compatible.

4oz, pints, gallons, & 3 gallon pail.



MATTE TRANSPARENT BRUSHING C-300

Non-Toxic Clear Brushing Glaze

Non-Toxic • Lead Free • Food Safe

C-300 Matte Transparent Glaze

Matte sheen at cone 06. Will turn glossy at higher temps. Certified AP Non-Toxic. Food safe and luster compatible.

4oz, pint and gallon.

FUNDAMENTALS™

Underglaze

~est 1954~



Fundamentals™ Underglaze was the first product line our company produced in 1954.

Blendable and Intermixable

All over coverage or in design



Apply directly to clay or bisque



Sgraffito



Fundamentals™ Underglaze naturally fire to a matte finish. Add clear glaze for a gloss finish.



AVAILABLE SIZES

2 oz jar
16 oz wide mouth pint
Gallons (Jet Black & China White)



Fundamentals™



UG-51
China White



UG-67
Ivory



UG-46
Bright Yellow



UG-203
Squash Yellow



UG-85
Orange Sorbet



UG-58
Harvest Gold



UG-204
Orange



UG-206
Fire Engine Red



UG-217
Red Coral



UG-207
Flame Red



UG-208
Dragon Red



UG-10
Crimson



UG-146
Pink Pink



UG-215
Blush



UG-216
Peach



UG-92
Lilac



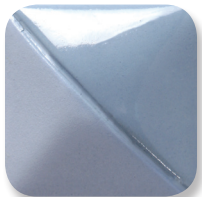
UG-87
Regal Purple



UG-93
Wild Violet



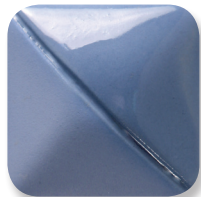
UG-94
Pansy Purple



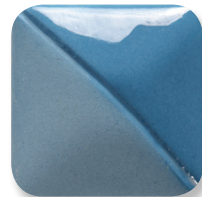
UG-3
Baby Blue



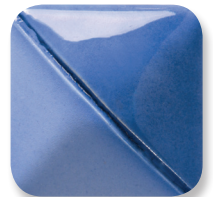
UG-72
Wedgewood Blue



UG-2
Sea Blue



UG-19
Electra Blue



UG-97
Bright Blue



Fires from
cone 05 to 10.
Vibrant colors
at higher
temperatures.



CONE 06-10
(998°C - 1285°C)
(1828°F - 2345°F)

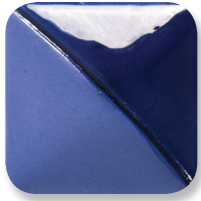
Check individual labels for color performance at higher temps.



Conforms to ASTM D 4236



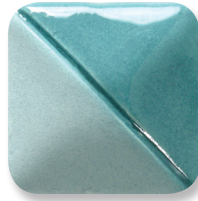
Dinnerware Safe with Clear Glaze



UG-1
Kings Blue



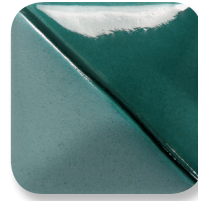
UG-219
Marine Blue



UG-82
Tucson Turquoise



UG-209
Jade



UG-91
True Teal



UG-68
Apple Green



UG-218
Pear Green



UG-22
Spring Green



UG-90
Green Mist



UG-21
Leaf Green



UG-210
Forest Green



UG-220
Sage



UG-32
Cocoa



UG-30
Sand



UG-57
Spice Brown



UG-213
Cinnamon



UG-31
Chocolate



UG-221
Cement



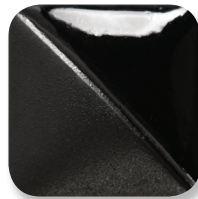
UG-34
Chestnut Brown



UG-53
Silver Grey



UG-198
Dark Grey



UG-50
Jet Black



Non-Toxic.
Dinnerware safe
when clear
glaze is applied

CLASS PACKS/KITS

VALUE
PRICE!

UG-KIT1 Contains 12 – 2 oz jars, one of each of the following colors.

UG-KIT1P Contains 12 – Pints jars, one of each of the following colors.



UG-51 China White
UG-46 Bright Yellow
UG-204 Orange
UG-206 Fire Engine Red

UG-208 Dragon Red
UG-87 Regal Purple
UG-97 Bright Blue
UG-1 Kings Blue

UG-68 Apple Green
UG-21 Leaf Green
UG-31 Chocolate
UG-50 Jet Black

Astro Gems™ & Raku

Astro Gems™



Conforms to
ASTM D 4236



NOT
Dinnerware Safe

CONE
06-04

(998°C - 1063°C)
(1828°F - 1945°F)



Astro Gems™ are an underglaze-based textural glaze that contains tiny crystals.



AS-510
White Opal



AS-513
Golden Sand



AS-512
Black Diamond

As surfaces may be difficult to properly clean if in contact with food, we recommend Astro Gems™ be used on decorative ware. If applied to greenware, fire to cone 04. If applied to bisque, fire to cone 06.

When fired, these crystals provide jewel-like spots on the matte surface of the glaze. Astro Gems™ can be applied to both greenware and bisque.

RAKU GLAZES

CONE
06-04
(998°C - 1063°C)
(1828°F - 1945°F)



NOT
Dinnerware Safe

Designed for the mysterious raku process



RK-100
Black Metallic



RK-101
Copper Metallic



RK-103
White Crackle



RK-104
Red



RK-105
Copper Penny



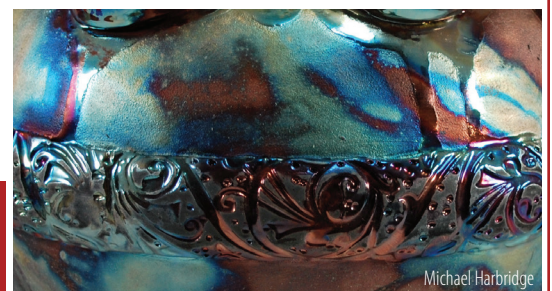
RK-106
Peacock Matte



RK-107
Oil Slick



Using combustibles and varying firing methods to produce unique finishes.



Michael Harbridge

Beautiful metallic lusters and crackle patterns

STONEWARE GLAZES

Varied in color and finish with mattes and glossy bright colors, glazes breaking as well as complex float surfaces.



SW-173 Amber Quartz



Kaitlyn Wancevich
@monkamingceramics

Depth,
Sophistication,
&
Reliability



SW402 Dark Flux over SW-173 Amber Quartz

For artists
working from
mid-range
to high fire
temperatures

Kitty Maer
@themuddyyogi



AVAILABLE SIZES

Wide mouth pints
5 lbs Dry (most glazes)
Washes available in 4 oz only



New Stoneware Glazes



SW-175
Rusted Iron



SW-176
Sandstone



SW-177
Raspberry Mist



SW-178
Fool's Gold

STONEWARE TEXTURES



SW-403
White Mudcrack



SW-404
Black Mudcrack



SW-405
Light Magma



SW-406
Dark Magma

Introducing textures
you can feel.



CONE
5-10

(1186°C - 1285°C)
(2167°F - 2345°F)



Conforms to
ASTM D 4236

Check each
color's label for
its personality
characteristics

New Stoneware Gloss



SW-501
White Gloss



SW-502
Yellow Gloss



SW-503
Orange Gloss



SW-504
Red Gloss



SW-505
Purple Gloss



SW-506
Bright Blue Gloss



SW-507
Bright Green Gloss



SW-508
Black Gloss

The stable quality of these highly pigmented glazes make it ideal for design work and full opaque coverage at mid-range temperatures.



The choice of clay body, thickness, of application, firing process, and temperature will affect the fired results. We always recommend testing.

Incorporate and combine other Mayco products with Stoneware glazes.

Check each color's label for its personality characteristics.



Stoneware Classic



SW-250
White Opal



SW-169
Frosted Lemon



SW-168
Coral Sands



SW-206
Melon



SW-205
Coral



SW-113
Speckled Plum



SW-119
Cinnabar



SW-128
Cordovan



SW-251
Pink Opal



SW-143
Abalone



SW-165
Lavender Mist



SW-134
Eggplant



SW-125
Purple Mist



SW-255
Grey Opal



SW-166
Norse Blue



SW-211
Glacier Blue



SW-252
Blue Opal



SW-207
Chambray



SW-101
Stoned Denim



SW-123
Sapphire

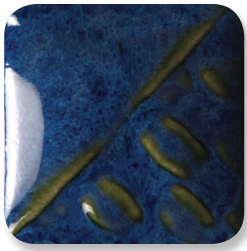


CONE
5-10
(1186°C - 1285°C)
(2167°F - 2345°F)

Check each
color's label for
its personality
characteristics

Endless glaze
combinations

Stoneware Classic



SW-100
Blue Surf



SW-212
Peacock



SW-201
Turquoise



SW-167
Sand & Sea



SW-253
Green Opal



SW-108
Green Tea



SW-121
Smoke



SW-210
Emerald



SW-120
Northern Woods



SW-131
Birch



SW-110
Oyster



SW-127
Olivine



SW-204
Amber Topaz



SW-122
Maycoshino



SW-112
Tiger's Eye



SW-203
Root Beer



SW-130
Copper Jade



SW-129
Copper Float



SW-132
Mirror Black



SW-133
Copper Ore



SW-209
Charcoal



Mayco Stoneware glazes are friendly to the user in application, layering and firing



Check each color's label for its personality characteristics

CONE
5-10
(1186°C - 1285°C)
(2167°F - 2345°F)

Stoneware Matte



SW-141
White Matte



SW-106
Alabaster



SW-161
Yellow Matte



SW-138
Lemon Meringue



SW-163
Soft Red Matte



SW-162
Pink Matte



SW-158
Lilac Matte



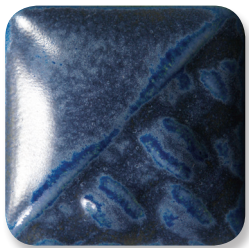
SW-136
Weathered Blue



SW-105
Frost Blue



SW-159
Blue Matte



SW-109
Capri Blue



SW-160
Chartreuse Matte



SW-135
Wintergreen



SW-164
Satin Patina



SW-172
Macadamia



Combining and layering Stoneware glazes with others in the palette can produce fantastic visual effects.

Visit us online for more Glaze Combinations



CONE
5-10
(1186°C - 1285°C)
(2167°F - 2345°F)



Check each color's label for its personality characteristics

Stoneware Matte



SW-124
Matte Maycoshino



SW-107
Dunes



SW-173
Amber Quartz



SW-145
Tea Dust



SW-174
Leather



SW-144
Lava Rock



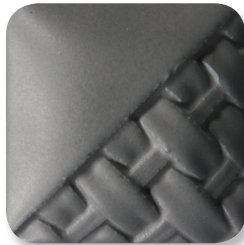
SW-104
Black Walnut



SW-111
Wrought Iron



SW-137
Storm Gray



SW-142
Gray Matte



SW-140
Black Matte



SW-149
Crackle White

Expand your creative possibilities in the studio.



Stays true to matte finish at mid-range temperatures.



Stoneware Crystal



SW-115
Midnight Rain



SW-116
Robin's Egg



SW-117
Honeycomb



SW-118
Sea Salt



SW-146
Aurora Green



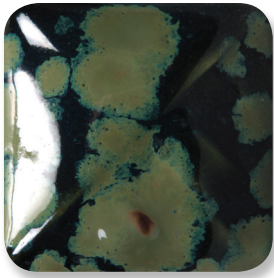
SW-147
Moonscape



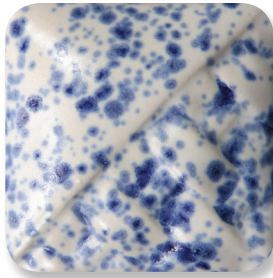
SW-148
Lime Shower



SW-150
Celadon Bloom



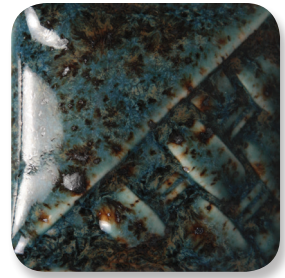
SW-151
Olive Float



SW-152
Blue Splatterware



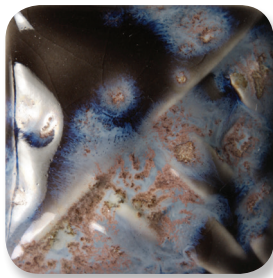
SW-153
Indigo Rain



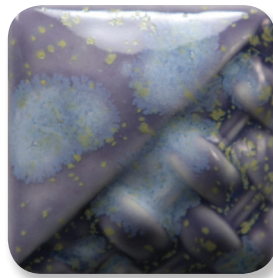
SW-154
Shipwreck



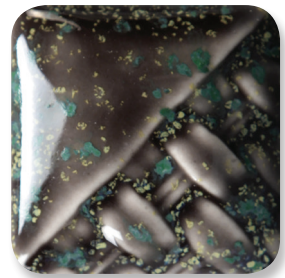
SW-155
Winter Wood



SW-156
Galaxy



SW-170
Blue Hydrangea



SW-171
Enchanted Forest

Layer or
Use Alone

CONE
5-10
(1186°C - 1285°C)
(2167°F - 2345°F)


 Conforms to
 ASTM D 4236

Check each color's label for its personality characteristics



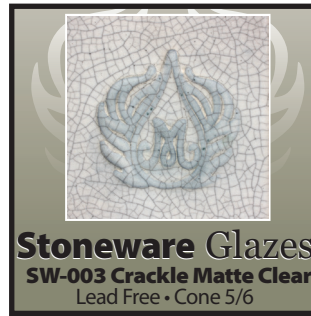
Mid-Range Clear Glazes and Stoneware Clear

Mid-Range Clear Glazes



SW-001 Clear
Brilliant clear, smooth gloss finish. Apply to soft-fired bisque (cone 04-06) and fire to cone 5/6 or up to cone 10. Can also be applied to dry greenware for single firing.

Available in pints, gallons and dry.



SW-003 Crackle Matte Clear
Developed for mid-range firing temperatures, where a fine crackle pattern will develop with 3 coats. Fire to cone 5/6. Crackle pattern may not develop at higher cone 9/10 temperatures.

Available in pints, gallons and dry.



SW-002 Matte Clear
A satin matte finish at cone 5/6 and will perform up to cone 10 with a more satin, less matte finish. Perfect for layering techniques and slip or when Underglazes are used.

Available in pints, gallons and dry.



SW-004 Zinc-Free Clear
A specialty clear glaze for use on glazes containing chrome-based pigments. Ensures a brilliant, smooth and crystal clear surface. Fire to cone 5/6.

Available in pints, gallons and dry.

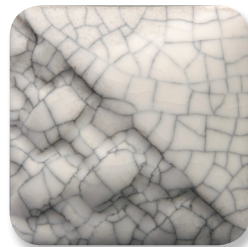
STONEWARE CLEAR



SW-001
Clear



SW-002
Matte Clear



SW-003
Crackle Matte Clear



SW-004
Zinc-Free Clear

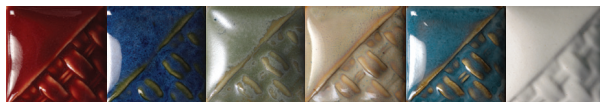
Value Packs



Stoneware Stars

This collection of Stoneware glazes offers Mayco's top-selling colors for a broad spectrum of color shades and numerous glaze combination possibilities.

SWKIT3 Contains 6 – pints of the following colors.



SW-119 Cinnabar
SW-100 Blue Surf

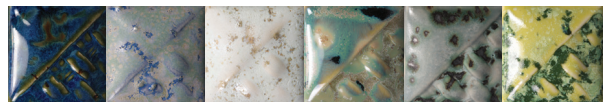
SW-108 Green Tea
SW-131 Birch

SW-101 Stoned Denim
SW-106 Alabaster

Stoneware Crystal

The Stoneware Crystal collection provides an assortment of Mayco's unique crystal glazes, designed to expand upon the surface with bursts of color where crystals lay. Use alone or in combination with other Stoneware glazes.

SWKIT4 Contains 6 – pints of the following colors.



SW-115 Midnight Rain
SW-116 Robin's Egg

SW-118 Sea Salt
SW-146 Aurora Green

SW-147 Moonscape
SW-148 Lime Shower

Stoneware Flux

Flux

SW-401 Light Flux
&
SW-402 Dark Flux



Enhance movement & promote reactions for interesting effects.



*SW-401
Light Flux



*SW-402
Dark Flux

Mayco Flux is a flowing glaze intended for use with other Stoneware glazes. Apply 1-3 coats over or under uniformly brushed or randomly dabbed on with a sponge. Designed to fire to cone 5/6; can be fired to cone 9/10 in oxidation or reduction firings.



Available in Pints and 4 oz jars

*Flux featured with SW-119 Cinnabar



SW-210
Emerald
under
SW-401
Light Flux



SW-134
Eggplant
under
SW-401
Light Flux



SW-130
Copper Jade
under
SW-401
Light Flux



SW-168
Coral Sands
under
SW-402
Dark Flux



SW-173
Amber Quartz
under
SW-402
Dark Flux



SW-167
Sand & Sea
under
SW-402
Dark Flux



Stoneware Wash

Mayco's Stoneware Washes are a multi-purpose product with limitless possibilities.



Can be used as stand-alone techniques or with any glaze from low-fire (cone 06/05) up to cone 10.

For all over coverage, brush on 1-2 coats



SW-301
Iron Wash



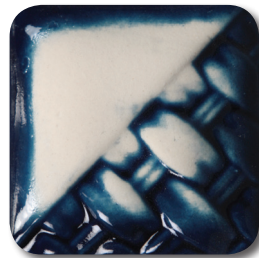
SW-302
Rutile Wash



SW-303
Manganese Wash



SW-304
Copper Wash



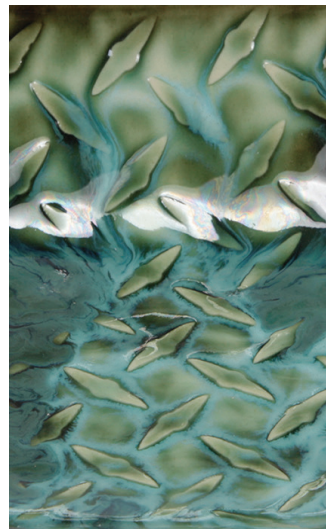
SW-305
Cobalt Wash



Available only in 4 oz jars.

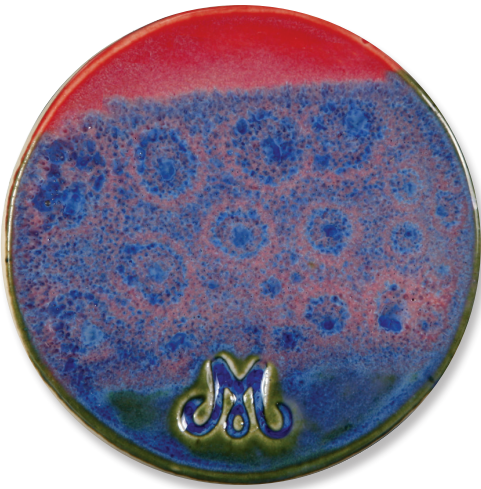


Beautiful in oxidation or reduction and can expand the glaze palette for an artist or teacher

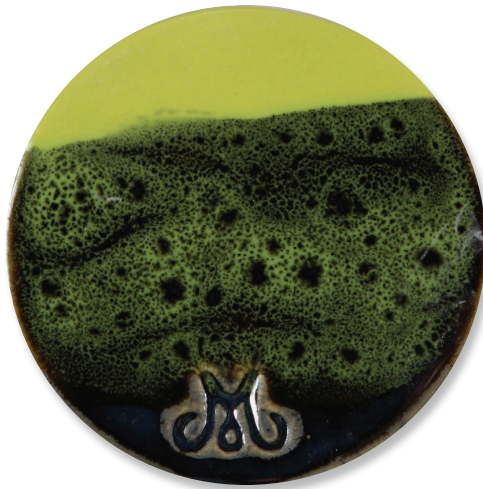


Our washes are metallic glaze colorants formulated for ease of use and versatility

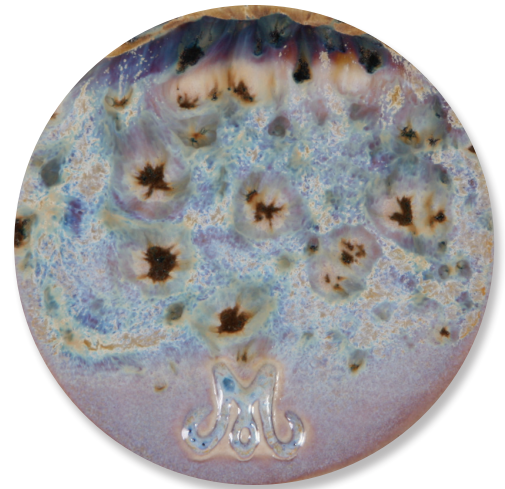
Stoneware Glaze Combinations



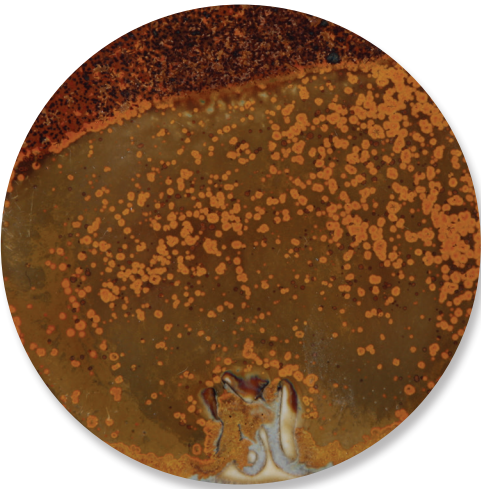
Cone 6
SW-177 Raspberry Mist
over
SW-100 Blue Surf



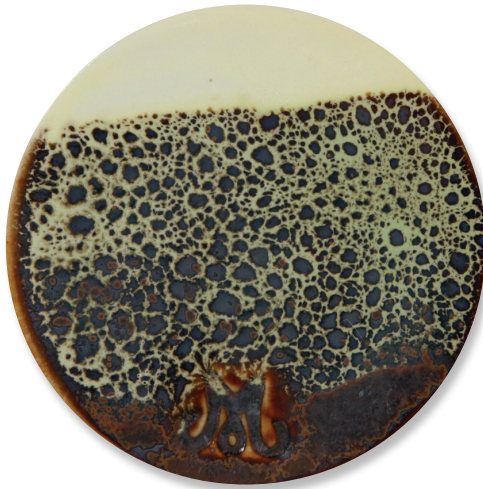
Cone 6
SW-507 Bright Green Gloss
over
SW-132 Mirror Black



Cone 6
SW-176 Sandstone
over
SW-165 Lavender Mist



Cone 10
SW-175 Rusted Iron
over
SW-107 Dunes



Cone 10
SW-502 Yellow Gloss
over
SW-104 Black Walnut



Cone 10
SW-508 Black Gloss
over
SW-117 Honeycomb



Visit us online to view our full Glaze Combo Library

Join us on Social media for updates, tips and inspiration!



Non-Fired Products

**Softee®
Acrylics**
A water-based
unique formula

Smooth and creamy.
Perfect for ceramics and
any craft surface! Opaque
coverage can be achieved
in one coat; two thin
coats are recommended.
Non-toxic.

SS-3 Honey Toast	SS-254 Golden Ochre	SS-210 Orange	SS-179 Antique Red	SS-176 Christmas Red	SS-141 Light Pink	SS-32 Razzberri	SS-92 Royal Fuchsia
SS-28 Hushed Violet	SS-368 Dusty Violet	SS-29 Dew Drop Blue	SS-331 Medium Blue	SS-335 Rich Blue	SS-317 Turquoise	SS-288 Bright Green	SS-276 Forest Green
SS-376 Limeburst	SS-19 Country Sage	SS-57 Accent Green	SS-127 Medium Portrait	SS-192 Light Taupe	SS-183 Rich Peach	SS-211 Orange Rust	SS-399 Terra Cotta
SS-198 Chocolate	SS-24 Chocolate Fudge	SS-212 Light Umber	SS-194 Medium Taupe	SS-234 Medium Mocha	SS-237 Dark Brown	SS-130 Medium Gray	SS-138 Flat Black



SS-112 White Metallic Pearl	SS-113 White Iridescent Pearl
SS-87 Emperor's Gold	SS-81 Shimmering Silver

Non-Fired Products

Magic ...The REAL Finish
Metallic



MM-102
Copper Metallic



MM-103
Dark Bronze Metallic



MM-105
Gold Metallic



MM-106
Steel Metallic



MM-202
Green Patina



MM-305
Rapid Rust



Magic Metallics™ Assortment

MM-KIT1 Contains 6 – 2 oz. jars, of the following colors.

MM-102 Copper Metallic

MM-105 Gold Metallic

MM-106 Steel Metallic

MM-202 Green Patina

MM-103 Dark Bronze Metallic

MM-305 Rapid Rust

Non-Fired Accessories

» AC-501 Gloss Brush-On Sealer

Water based formula seals ceramics with a glossy finish. Use over acrylic stains.

» AC-502 Matte Brush-On Sealer

Water-base formula seals ceramics with a matte finish. Use over acrylic stains.

» AC-527 Mending & Sculpting Paste

Mending and Sculpting paste is a water based texturing medium that can be added to virtually any water based acrylic. Use to mend cracks on non-fired finishes. Mending and Sculpting Paste can be used to create unique decorating finishes. Mix with Softees in a 1:1 ratio to add color. Use with cake decorating tools to create frosting like effects.

» AC-523 Non-Fired Snow

Non-Fired Snow is a water based acrylic used to create snow effects. It's tough, durable properties allow it to be applied to a fired glaze surface or over-top an acrylic finish. Tint Non-Fired Snow with Softees® Acrylics or Softees® Pearls. If a darker color is desired, apply Snow first and allow to dry. Apply top coat with desired color.



Mid-Range Firing Guide

Mid-Range Firing Guide

Many Mayco glazes can be used at higher temperatures successfully. We have provided each color's performance under the following testing conditions: application of 3 coats of glaze on a stoneware buff body, fired to cone 6 (1222°C / 2232°F). We recommend testing under your conditions before using in your work. For more information on mid-range performance including surface characteristics, movement and recommended number of coats, visit our website at www.maycocolors.com.

Stroke & Coat*

SC-1	Pink-A-Boo	Lightens
SC-2	Melon-choly	Slightly darkens
SC-3	Wine About It	Strongly lightens to a lavender
SC-4	Salsa	Strongly lightens
SC-5	Tiger Tail	Fades to a light olive green
SC-6	Sunkissed	Slightly lightens
SC-7	Leapin' Lizard	Slightly lightens
SC-8	Just Froggy	No change
SC-9	Jaded	Slightly lightens
SC-10	Teal Next Time	No change
SC-11	Blue Yonder	Slightly lightens
SC-12	Moody Blue	Slightly lightens
SC-13	Grapel	Lightens to a faded lavender
SC-14	Java Bean	Lightens to a reddish-orange brown
SC-15	Tuxedo	No change
SC-16	Cotton Tail	No change
SC-17	Cheeky Pinky	Fades to pale pink/white
SC-18	Rosey Posey	Fades to a dull pink
SC-20	Cashew Later	No change
SC-22	Carrot Top	Fades to light melon
SC-23	Jack O'Lantern	Slightly lightens
SC-24	Dandelion	Lightens to a light dull yellow
SC-25	Crackerjack Brown	Lightens to a slightly darker red-orange brown
SC-26	Green Thumb	Slightly lightens
SC-27	Sour Apple	Slightly lightens to pale lime
SC-28	Blue Isle	Slightly lightens
SC-29	Blue Grass	No change
SC-30	Blue Dawn	Lightens to a dull slate blue
SC-31	The Blues	No change
SC-32	Bluebeard	No change
SC-33	Fruit of the Vine	Slightly Lightens
SC-34	Down to Earth	No change
SC-35	Gray Hare	Slightly darkens
SC-36	Irish Luck	No change
SC-37	Ivory Tower	Slightly lightens
SC-39	Army Surplus	No change
SC-40	Blueberry Hill	Changes to a dark lavender
SC-41	Brown Cow	Slightly lightens
SC-42	Butter Me Up	Slightly lightens
SC-43	Lettuce Alone	Slightly lightens
SC-45	My Blue Heaven	No change
SC-46	Rawhide	Slightly lightens
SC-48	Camel Back	Lightens to a caramel brown
SC-50	Orange Ya Happy	Slightly lightens
SC-51	Poo Bear	Fades to a greenish-yellow
SC-52	Toad-ily Green	Slightly lightens
SC-53	Purple Haze	Lightens to a powder blue
SC-54	Vanilla Dip	Slightly lightens
SC-55	Yella Bout It	Slightly lightens
SC-58	501 Blues	No change
SC-60	Silver Lining	No change
SC-65	Peri-twinkle	No change
SC-70	Pink-A-Dot	Color drastically fades similar to an off white

SC-71	Purple-licious	Turns dark blue
SC-72	Grape Jelly	Turns dark blue
SC-73	Candy Apple Red	No change
SC-74	Hot Tamale	No change
SC-75	Orange-A-Peel	No change
SC-76	Cara-bein Blue	No change
SC-77	Glo-Worm	No change
SC-78	Lime Light	No change
SC-79	It's Sage	Slightly darkens
SC-80	Basketball	No change
SC-81	Cinnamon Stix	Slightly lightens to a dull red
SC-82	Tuscan Red	Slightly lightens to medium-dark red
SC-83	Tip Taupe	No change
SC-85	Orkid	Fades to light purple
SC-86	Old Lace	No change
SC-87	Ruby Slippers	Lightens to a dull neutral red
SC-88	Tu Tu Tango	No change
SC-89	Cutie Pie Coral	No change
SC-90	Elephant Ears	No change
SC-91	Seabreeze	No change
SC-92	Café Ole	Slightly lightens
SC-93	Honeydew List	No change
SC-94	Curry Around	No change
SC-95	Pinkie Swear	Drastically lightens
SC-96	Aqu-ward	Slightly lightens
SC-97	Cant-elope	No change

Speckled Stroke & Coat*

SP-201	Speckled Pink-A-Boo	Slightly lightens
SP-205	Speckled Tiger Tail	Lightens to olive green
SP-206	Speckled Sunkissed	Lightens to bright yellow
SP-209	Speckled Jaded	Slightly lightens
SP-210	Speckled Teal Next Time	Darkens to forest green
SP-211	Speckled Blue Yonder	Slightly lightens
SP-212	Speckled Moody Blue	No color change
SP-213	Speckled Grapel	Slightly lightens
SP-215	Speckled Tuxedo	No change
SP-216	Speckled Cotton Tail	No change
SP-223	Speckled Jack O'Lantern	Slightly lightens
SP-226	Speckled Green Thumb	No change
SP-227	Speckled Sour Apple	Slightly lightens
SP-231	Speckled The Blues	Slightly lightens
SP-237	Speckled Ivory Tower	Slightly lightens
SP-241	Speckled Brown Cow	Lightens to med. brown
SP-245	Speckled My Blue Heaven	Slightly lightens
SP-253	Speckled Purple Haze	Turns medium blue
SP-254	Speckled Vanilla Dip	No change
SP-260	Speckled Silver Lining	No change
SP-270	Speckled Pink-A-Dot	Color nearly fades away
SP-274	Speckled Hot Tamale	No change
SP-275	Speckled Orange-A-Peel	No change
SP-277	Speckled Glo-Worm	No change
SP-288	Speckled Tu Tu Tango	Slightly darkens

Foundations*

FN-001	White	No change
FN-002	Yellow	Slightly lightens
FN-003	Orange	No change
FN-004	Red	No change
FN-005	Pink	Slightly lightens
FN-006	Blue	No change
FN-007	Green	Slightly lightens
FN-008	Brown	No change
FN-009	Black	No change
FN-010	Tree Green	No change
FN-011	Light Blue	No change
FN-012	Lavender	Lightens
FN-013	Light yellow	No change
FN-014	Antique White	Slightly lightens
FN-015	Brick Red	Lightens to medium red
FN-016	Harvest Orange	Slightly lightens
FN-017	Purple	Lightens to medium blue

FN-018	Bright Blue	Slightly lightens
FN-019	Dark Blue	Lightens to cobalt blue
FN-020	Medium Green	Slightly darkens
FN-021	Olive Green	Slightly darkens
FN-022	Tan	No change
FN-023	Cinnamon	Slightly darkens
FN-024	Gray	No change
FN-025	Raspberry Whip	Fades to light lavender
FN-026	Salmon Mousse	Lightens
FN-027	Glade Green	Slightly lightens
FN-028	Wisteria Purple	Fades to light purple
FN-029	Rich Chocolate	Lightens to FN-023 Cinnamon
FN-031	Corn Flower Blue	No change
FN-032	Canton Jade	No change
FN-033	Mediterranean Teal	No change
FN-034	Big Sky Blue	Slightly lightens
FN-035	Deep Red	No change
FN-036	Grape	Slightly lightens
FN-037	Chartreuse	Slightly lightens
FN-038	Sand	Slightly lightens
FN-039	Light Gray	Lightens
FN-040	Pumpkin	Slightly lightens
FN-041	Medium Blue	No change
FN-042	Teal Blue	No change
FN-043	Bright Jade	Slightly lightens
FN-044	Yellow Orange	Slightly lightens
FN-045	Taupe	Slightly lightens
FN-046	Sage	No change
FN-047	Light Pink	No change
FN-048	Bright Pink	No change
FN-049	Flammingo	No change
FN-050	Coral	No change
FN-051	Strawberry	No change
FN-052	Tangerine	No change
FN-053	Mint	No change
FN-054	Pistachio	No change

Foundations* Sheer

FN-201	Golden Clear	No change
FN-202	Yadro	Fades to a clear pale green
FN-203	Dry Champagne	Turns clear grayish-green
FN-204	Mudpuddle Brown	Turns clear olive green
FN-205	Saddle Tan	Turns tan clear
FN-206	Lemon Ice	Fades to clear
FN-207	Orange Slice	Burns out to a dull pink
FN-208	Crystal Coral	Fades to clear
FN-209	Floral Pink	Fades to clear
FN-211	Sheer Blue	Lightens
FN-212	Blue Diamond	Lightens
FN-213	Saffire Blue	Lightens
FN-214	Pastel Jade	Fades to slight green, Pits on every coat
FN-216	Sea Glass	Fades to clear
FN-220	Sooty Grey	Fades to faint smokey green
FN-221	Milk Glass	Fades to clear
FN-222	Indigo	Turns to a cobalt blue
FN-223	Amethyst	Light blue
FN-224	Key Lime	Fades to clear
FN-225	Watermelon	Fades to light coral
FN-226	Squash Blossom	Slightly lightens
FN-227	Celery	Fades to clear
FN-228	Slate Gray	Turns bluish-sage
FN-229	Iced Mocha	Fades to light olive green
FN-230	Poppy	Turns light milky coral
FN-231	Clearly Jade	Turns sage

Foundations* Matte (all turn to a gloss finish)

FN-301	Marshmallow White	Slightly dulls
FN-302	Ivory Cream	Green tint
FN-304	Black Velvet	No change
FN-305	Milk Chocolate	Slightly lighten
FN-306	Pumpkin Tart	No change

Guide continued on following page

Mid-Range Firing Guide

Underglazes

UG-1	Kings Blue	Slightly darkens
UG-2	Sea Blue	Slightly lightens
UG-3	Baby Blue	Slightly darkens
UG-10	Crimson	Lightens to UG-92 Lilac
UG-19	Electra Blue	Darkens to a teal
UG-21	Leaf Green	Darkens to a light forest green
UG-22	Spring Green	Darkens to a pea green
UG-30	Sand	Lightens
UG-31	Chocolate	Lightens to a teddy bear brown
UG-32	Cocoa	Becomes milky and slightly matte
UG-34	Chestnut Brown	No change
UG-46	Bright Yellow	No change
UG-50	Jet Black	No change
UG-51	China White	No change
UG-53	Silver Grey	Blues
UG-57	Spice Brown	Slightly dulls
UG-58	Harvest Gold	Slightly brightens
UG-67	Ivory	No change
UG-68	Apple Green	Fades to mint
UG-72	Wedgewood Blue	Slightly darkens
UG-82	Tucson Turquoise	Slightly darkens
UG-85	Orange Sorbet	Slightly darkens
UG-87	Regal Purple	Turns grape purple/Slightly darkens
UG-90	Green Mist	Darkens to a spearmint green
UG-91	True Teal	Turns a teal blue
UG-92	Lilac	Dulls
UG-93	Wild Violet	Deepens to a blue-purple
UG-94	Pansy Purple	Deepens to a dark blue
UG-97	Bright Blue	Deepens to a medium blue
UG-100	Terra Cotta	Lightens to a basketball brown
UG-146	Pink Pink	Slightly darkens
UG-198	Dark Grey	Lightens to a taupe
UG-203	Squash	Slightly lightens
UG-204	Orange	No change
UG-206	Fire Engine Red	Slightly darkens
UG-207	Flame Red	Darkens to UG-208 Dragon Red
UG-208	Dragon Red	Slightly darkens
UG-209	Jade	Color deepens
UG-210	Forest Green	Slightly darkens
UG-213	Cinnamon	Lightens to a brick red

Elements™

EL-101	Oyster Shell	Turns creamy mint green
EL-103	Sea Spray	Turns a milky white/light jade
EL-106	Tidal Pool	Mottled milky jade w/ brown chunks
EL-107	Amber Ash	Turns speckled varigated gold/blue
EL-110	Mudslide	Turns dirty dijon w/ dark brown breaking
EL-111	Ruby Creek	Mottled caramel with dark brown chunk
EL-112	Tornado Sky	Turns gold-brown w/ dark brown specks, Opaque
EL-113	Spanish Moss	Turns dark olive cascade - Breaks w/ brunt orange accent
EL-117	Waterfall	Turns burnt orange w/ olive cascade
EL-118	Blue Grotto	Turns dark brown
EL-119	Burnished Steel	Turns mirror black w/ hints of dull frost
EL-120	Black Ice	Slight change with iridescent finish
EL-121	Copper Adventurine	Turns dark brown w/ copper float-Sparkles remain
EL-122	Malachite	Turns glossy sage
EL-123	Patina	Turns glossy rose w/ seafoam green frosting
EL-124	Stormy Blue	Turns beige w/ blue frost
EL-125	Sahara Sands	Mottled olive/brown with milky float
EL-127	Rose Granite	Deep amber with gold-where heavier pink and purple hues show
EL-128	Wheat	Turns dijon w/ beige float
EL-129	Slate	Turns dark brown w/ lighter brown and blue cascading
EL-130	Sea Green	Turns olive green w/ blue-green mottling
EL-131	Turtle Shell	Turns olive green w/ blue-green mottling
EL-132	Rust Red	Turns chestnut brown
EL-133	Autumn	Turns chestnut brown w/ gold cascading
EL-134	Mirror Blue	No change

EL-135	Rare Earth	Turns muddy brown
EL-136	Lapis Lagoon	Turns transparent forrest green
EL-137	Black Adventurine	Turns dark brown w/ burnished cascading
FN-215	Aztec Jade	Lightens to a yellowish-green
FN-217	Evergreen Fir	Turns a mottled brown/green
FN-218	Green Sapphire	Darkens to forest green
FN-219	Lustre Green	Turns olive green
EL-138	Desert Canyon	Darkens to a deep brown
EL-139	Nectar	Slightly lightens
EL-140	Toasted Almond	Lightens to a creamy white
EL-141	Aged Bronze	Brown lightens w/mottled tan
EL-142	Grass	Slightly darken with blue mottling
EL-143	Cactus Flower	Turns to amber with blue & green pooling in texture
EL-144	Dark Amethyst	Turns to dark olive green with blue pooling in texture
EL-145	Ginger Root	Turns to amber with blue and green pooling in texture
EL-146	Rain Cloud	Turns beige with gray mottling
EL-147	Creek Bed	Turns olive green with blue pooling in texture

Elements™ Chunkies

EL-204	Glowing Embers	Base glaze turns caramel - Crystals shrink turn dark brown
EL-205	Jade Pebble	Base glaze turns gold - Crystals turn gray-brown & move
EL-207	Gold Mine	Base glaze turns jade w/ burnt orange chunks - Crystals turn green
EL-208	Moss Creek	Base glaze turns rust red w/ olive cascade/ Crystals fade
EL-209	Night Sky	Turns a dark muddy brown/Crystals fade

Pottery Cascade

PC-601	Clear Cascade	Clear with a slight tint of light blue
PC-602	White Cascade	Clear with white float

Jungle Gems™

CG-707	Woodland Fantasy	Turns medium brown w/ Crystals turning to an olive green
CG-713	Peacock Green	Turns olive green - Crystals fade
CG-716	Pagoda Green	Turns gold brown - Crystals orange with blue/purple halo
CG-717	Pistachio	Turns mint green with faded crystals
CG-718	Blue Caprice	Base glaze lightens and crystals flow together
CG-722	Seawind	Crystals flow and slightly fade
CG-750	Noel	Crystals fade and run
CG-753	Sassy Orange	Crystals fade and run
CG-756	Firecracker	Base glaze boils - Crystals fade
CG-772	Sand Petal	Base glaze glosses and boils - Crystals remain and expand
CG-779	Black Opal	Base glaze boils - Crystals lose shape and fade
CG-780	Mystic Jade	Base glaze fades - Crystals turn gold and move
CG-783	Strawberry Sundae	Base glaze turns orkid - Crystals turn seafoam green
CG-785	Royal Fantasy	Turns blue w/ purple mottling-Crystals disappear
CG-786	Obsidian	No change to base glaze - Crystals fades and turn blue
CG-788	Dutch Enamelware	No change to base glaze - Crystals fade
CG-795	Yadro Print	Base glaze turns to transparent olive green - Crystals fades
CG-798	Black Iris	Base glaze no change and boils - Crystals turn white
CG-954	Wildfire	Base glaze no change - Crystals fade
CG-958	Lagoon Blue	Base glaze no change - Crystals fade
CG-961	Evergreen	Color darkens - Crystals fades and cascades, Semi-Transparent
CG-962	Blue Azure	Color fades and turns mottled blue/jade-Crystals turn golden
CG-963	Lemon Lime	Color remains - Crystals fade
CG-964	Kaleidoscope	Color fades - Crystals fade

CG-965	Mocha Marble	Base glaze turns transparent olive green - Crystals fade
CG-966	Tiger Lilly	Base glaze fades/Crystals fade
CG-967	Green Agate	Base glaze fades w/ light blue cascades - Crystals fade
CG-968	Peppermint Twist	Base glazes fades to white - Crystals fade
CG-969	Floral Fantasy	Base glazes turns to violet w/ purple and blue float
CG-970	Masquerade	Base glaze no change - Crystals fade & cascade
CG-971	Purple Cosmos	Base glaze turns transparent violet - Crystals turn brown
CG-972	Dragon's Breath	Base glaze turns brown/olive gold - Crystals fade
CG-973	Alligator	Base glaze turns dark green and glossy - Crystals fade
CG-974	Bloomin' Blue	Base glaze turns to olive w/ blue cascading - Crystals fade
CG-975	Sky Diamonds	Base glaze no change - Crystals turn green
CG-977	Ink Spots	Base glaze no change - Crystals bleed
CG-978	Artic Splash	White crystals fade
CG-979	Meadows	Color fades
CG-980	Coral Puff	Color fades
CG-981	Fruit Freckles	Color lightens - Crystals fade
CG-982	Mixed Melon	Base glaze and crystals fade
CG-983	Koi Pond	Blue Darkens, orange and yellow crystals fade
CG-984	Lady Bug	No change
CG-985	Monet's Pond	Base glaze turns grayish-blue; green crystal fades
CG-986	Smoke & Fire	Base glaze turns blue-green; all but red crystal fade
CG-987	Tree Frog	Base glaze darkens - Crystals fade
CG-988	Fireflies	Base glaze turns blue-green; all but yellow crystal fade
CG-989	Fruit Punch	Base glaze lightens - Crystals disappear
CG-990	Starry Night	Base glaze darkens - yellow crystal remains
CG-991	Mountain Moss	Base glaze fades to pale green
CG-992	Mint Chip	Green darkens; black and brown specks flow.
CG-993	Lavender Sprigs	Purple changes to a golden and cream color
CG-994	Field & Flowers	Green darkens; black and brown specks flow.
CG-995	Foggy Mist	Fades to yellow and white with gray specks.
CG-996	Spring Rain	Fades to a light yellow and blue
S-2701	Peacock Eyes	Crystals fade and cascade
S-2702	Northern Lights	Base glaze fades - Crystals fade and cascade
S-2703	Berryberry Pie	Base glaze fade - Crystals turn green & specks cascade
S-2704	Plum Jelly	Turns blue - Crystals disappear, blue specks remain & cascade
S-2708	Oriental Carmel	Base glaze lightens - Crystals fade and cascade
S-2709	Cappuccino Mint	Base glaze lightens to golden brown - Green crystals fade
S-2711	Tahiti Grape	Base glaze lightens - Crystals turn gold & specks remain
S-2712	Monsoon Seas	Base glaze darkens w/ greenish hue-Crystals turn blue-green
S-2714	Herb Garden	Base glaze fades - Crystals fade & cascade
S-2715	Spotted Kiwi	Base glaze no change - Crystals cascade into glaze
S-2716	Celestial Blue	Base glaze no change - Crystals cascade into glaze
S-2718	Cosmic Black	Base glaze lightens to cream clear - Crystals turn blue-green
S-2723	Grape Divine	Base glaze lightens - Crystals turn yellow
S-2724	Lotus Blossom	Base glaze lightens - Crystals darken
S-2725	Safari	Base glaze turns olive green - Crystals move
S-2726	Cheetah	Base glaze no change - Crystals cascade
S-2727	Poppy Fields	Base glaze no change - Crystals cascade
S-2729	Citrus Splash	Base glaze no change - Crystals lighten

Speckta-Clear

SG-701	Star Dust	Specks turn brown and begin to flow
SG-702	Celebration	Specks begin to flow

Art Materials Safety Laws & Regulations

Legislation relating to art materials safety began with the initial passage of the **Federal Hazardous Substances Act (FHSA)** in 1960 which required products containing acute health hazards to display mandatory warnings on their labels. FHSA was amended in 1988 by the **Labeling of Hazardous Art Materials Act (LHAMA)**. LHAMA established that art materials sold in the U. S. must also be evaluated by a qualified toxicologist for chronic toxicity according to the chronic hazard labeling standard, ASTM D 4236.

The Consumer Product Safety Improvement Act of 2008 (CPSIA) created the requirement that a General Conformity Certificate (GCC) must be prepared for products "primarily intended" for use by children (now federally defined as age 12 and under). This certificate documents that the product has been tested and meets appropriate standards. Certificates of Compliance are available at www.maycocolors.com

The primary U.S. governmental agency responsible for creating regulations for the enforcement of these laws is the Consumer Product Safety Commission (CPSC).

As the Globally Harmonized System (GHS) of classification and labeling of chemicals becomes adopted in the U.S. and around the world, laws and regulations can be expected to change. As of 2014, the only U.S. regulations that have been impacted by GHS are those administered by OSHA; specifically the replacement of MSDS with SDS and the new labeling requirements for industrial packaging.

ASTM D 4236

This is the Standard Practice for Labeling Art Materials for Chronic Health Hazards. This standard was originally developed in 1983 and it describes the process for developing precautionary labels and the hazards warning that belong on a label. When you see a symbol and/or statement on a product label that states: "Conforms to ASTM D 4236" this means:

1. that an independent toxicologist has reviewed and evaluated art material product formulations
2. that current, generally accepted scientific and medical knowledge was consulted to assess formula components
3. that a report of the findings was submitted to the manufacturer indicating what, in any, hazards warning must be placed on a product label.
4. products that do not contain any hazardous materials may then be marketed as non-toxic.

Art & Creative Materials Institute (ACMI)

ACMI is an international association of over 220 arts, craft and creative material manufacturers which seeks to promote safety in art and creative products through its certification program. Mayco joined ACMI in 2013, granting us the privilege to use ACMI's "AP" seal on approved product labels.

As our products are in the process of being re-evaluated by ACMI toxicologists you may see the following symbols used to indicate an individual product's safety classification:



The AP and Non-Toxic seals are equivalent – both signify Non-Toxic products. CL (Caution Label) signifies products for which there are health caution warnings on the label.

Food Safe Surfaces

A food safe surface is both a regulatory determination and a practical matter. First the legal: the Food & Drug Administration (FDA) enforces a guideline that measures the amount of lead and/or cadmium that leaches out of a glaze (ASTM method C738: Lead and Cadmium Extracted From Glazed Ceramic Surfaces). If the measurement is below the threshold the glaze can be marketed as "Food Safe." ALL Mayco glazes meet FDA guidelines and are food safe.

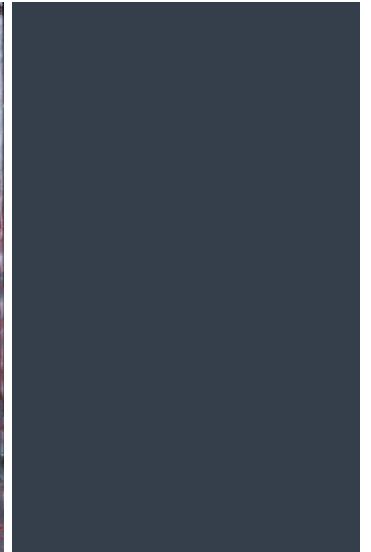
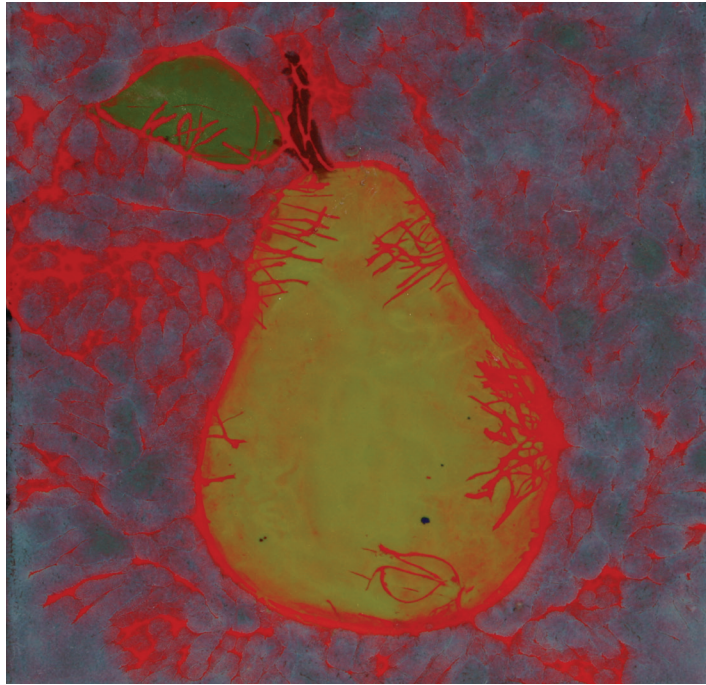
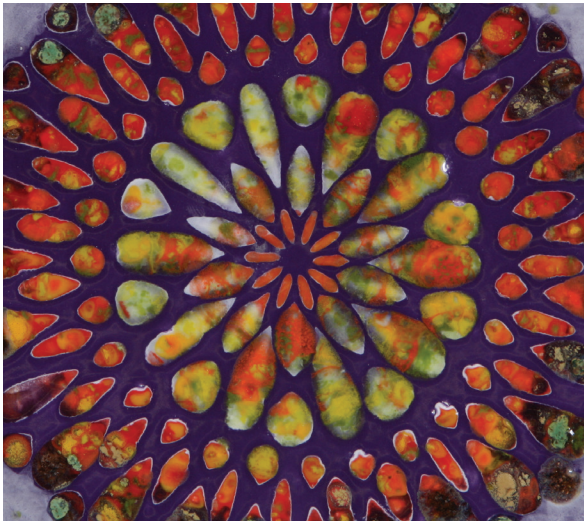
The practical: many Mayco glazes are designed to create surfaces textures, such as our crackle and crystal glazes. These textured surfaces can trap food and lead to bacterial growth. Our company philosophy, consistent with our views on product safety, is to avoid using textural glazes for food surface containers. Therefore we voluntarily add the following phrase to textural glazes:

"May not be suitable for dinnerware due to the fired surface characteristics which can make the surface difficult to properly clean."

Please Note: Due to potential contamination during studio application, handling and firing we cannot guarantee your fired results will be food safe. If you use Mayco glazes on products that you intend to resell, you are required to provide test results to your customers. Please consult the CPSC website for updates to testing requirements as fuller implementation of the new laws unfold.

Safety Data Sheets (SDS)

GHS now mandates a 16-part Safety Data Sheet (SDS), which replaces MSDS sheets. While symbols and some terminology have changed, the essential information from MSDS to SDS remains the same for our products. Available at www.maycocolors.com



 **Mayco®**

CAT-27E

Mayco Colors
Coloramics, LLC
4077 Weaver Court South
Hilliard, OH 43026

614-876-1171
www.maycocolors.com

